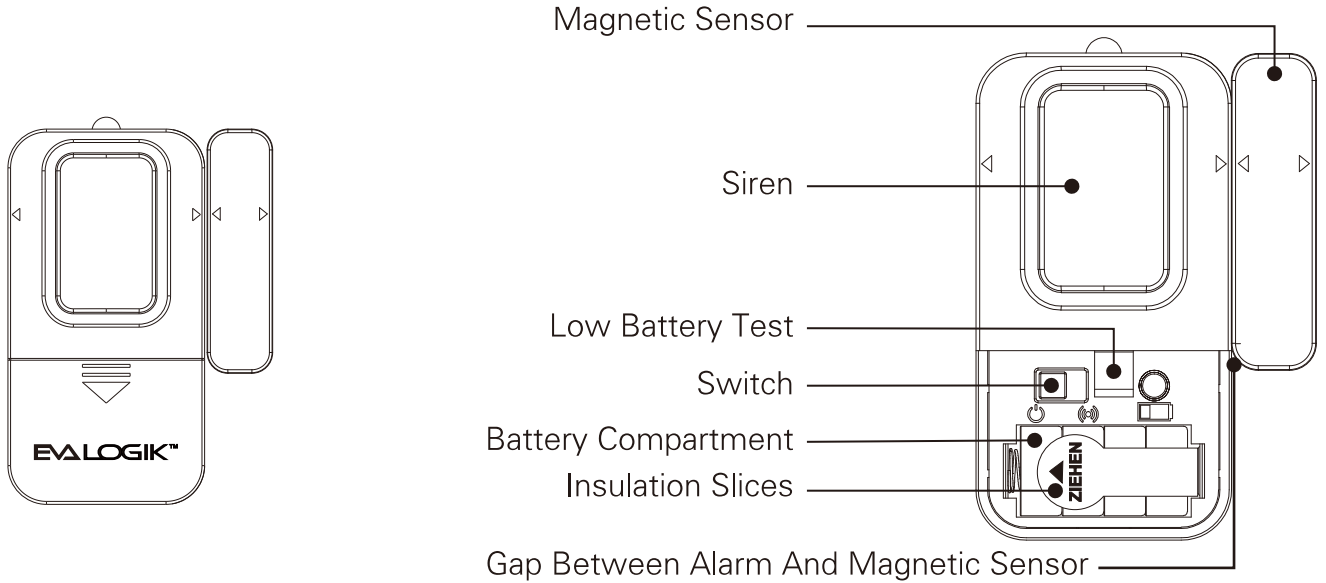


# NST001 Window or Door Alarm Manual

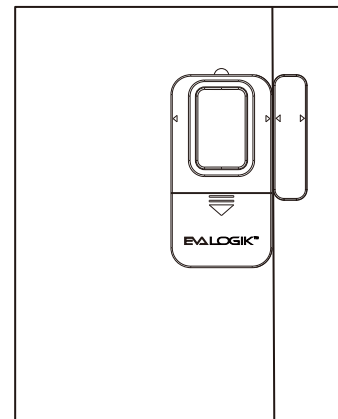
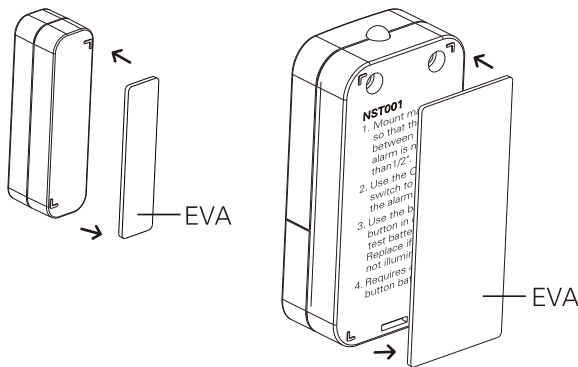


(Alarm is activated when switched ON and gap between alarm and magnetic sensor is greater than 1/2")

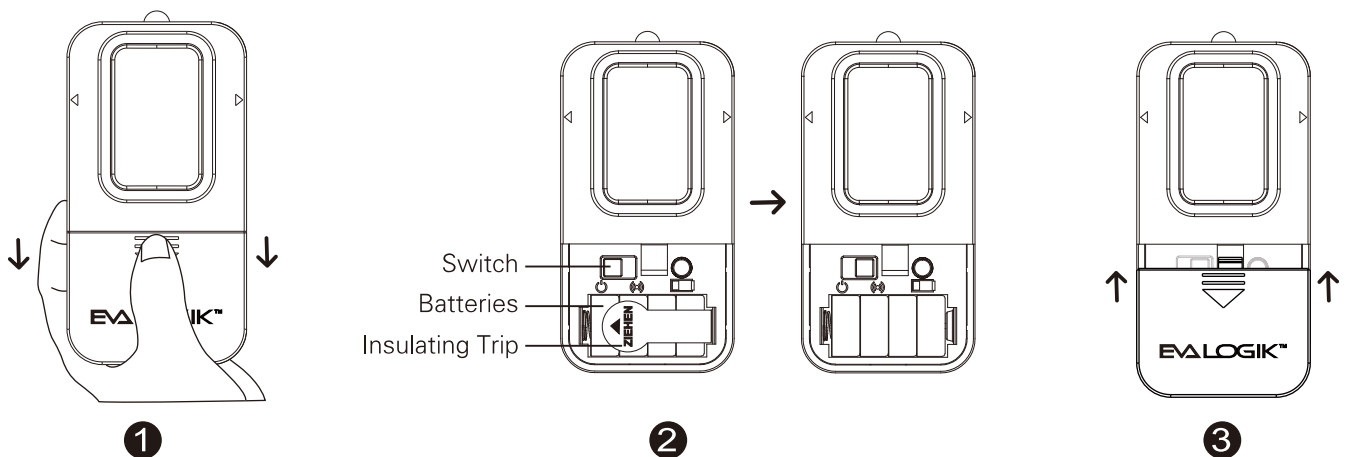
## INSTALLATION:

**Step 1 :** Using the double sided adhesive tape provided, mount the alarm and magnetic sensor on window, door, or cabinet to be protected.

**Step 2:** Placing one of the units on the part of the fixture that opens (window) and the other unit on the stationary part of the fixture (frame). Mount so that when the window, door or cabinet is closed, the gap between the alarm and sensor is no more than 1/2" (preferably less).



**Step 3:** Open battery cover, remove battery insulating trio and push switch to ON position, then close battery cover.



# NST001 Window or Door Alarm Manual

**OPERATION:** To arm the unit, slide cover off the battery compartment located on the front of the main unit. Toggle ON/OFF switch to the ON(🔊) position. The window on the housing will become red. Replace battery compartment cover. Whenever the protected window, door or cabinet is opened (causing the alarm to be separated from the magnetic sensor by more than 1/2" ), the alarm siren will sound continuously 60 seconds.

To disarm the unit, slide cover off the battery compartment. Toggle ON/OFF switch to OFF(🔇) position. Make sure the window, door or cabinet is closed before rearing.

Note: To test, a cloth can be used to cover the alarm to reduce risk of hearing damage.

## CARE AND MAINTENANCE

To clean the unit housing, use a soft cloth slightly dampened with water and wipe dry.

Do not use chemical agents as this may damage and discolor the unit.

**BATTERY TEST:** The Magnetic Window or Door Alarm requires 4pcs LR44 button batteries (included). Average battery life for typical usage is 1 year.

1. Slide cover off the battery compartment located on the front of the main unit.
2. Push the "battery test" push button in the battery compartment. If the light illuminates, the battery is still good. If it fails to illuminate, replace all batteries.
3. Insert 4pcs LR44 button batteries noting polarity.
4. Replace battery compartment cover.

**IMPORTANT:** Remove batteries before storing the Alarm for extended periods. Batteries corrode over time and may cause permanent damage to the unit. Different types of batteries or new and used batteries should not be mixed. Depleted batteries should be removed from the unit and disposed of properly.

**FOR INDOOR USE ONLY!**

**DO NOT USE IN WET LOCATIONS!**

### **WARNING**

Risk of personal injury Prolonged exposure to alarm siren may cause permanent hearing loss.

### **CAUTION**

Batteries may leak harmful liquids or ignitable materials or explode causing injury and product damage

1. Do not mix old and new or other battery types.
2. Replace all batteries at the same time.
3. Replace fully discharged batteries immediately.