

Meet your new smart switch !



Power: 120V AC, 60Hz
 Wireless Frequency: 2.4GHz
 Wireless Standard: IEEE802.11b/g/n
 Maximum Load: 150W LED, 500 W incandescent
 Minimum Load: 5W for LED bulbs
 Range: Up to 100 feet line of sight
 Temperature Range: 32-104° F (0-40° C)

For indoor use.

Convention	Description	Convention	Description
Part 1. Installation	<ul style="list-style-type: none"> Pre-installation preparation Installation steps 	Part 5. Network Configuration	<ul style="list-style-type: none"> Adding your device to Wi-Fi network
Part 2. Wiring Diagram	<ul style="list-style-type: none"> Wiring Instructions single pole and 3-way wiring diagram 	Part 6. Parameter Settings	<p>Function description</p> <ul style="list-style-type: none"> LED Indicator Status Setting Restore State after Power Failure Light Off State Setting Button Function Setting
Part 3. Manual Control	<ul style="list-style-type: none"> LED Indicator/ Button function Adding / reset the device (Factory setting) Min & Max Brightness Value Setting 	<p>For more details, please refer to the manual parts. If you have any questions during installation, Please contact us ask@nie-tech.com</p>	
Part 4. APP Connection	<ul style="list-style-type: none"> Download the app Add a device in your app Work with Amazon Echo & Google Home If you cannot configure it by the default mode successfully, try to connect by AP mode. 		

Part 1. Installation

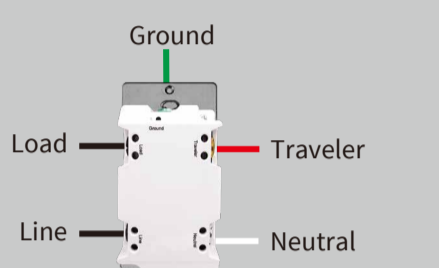
A Few Quick Reminders

A quick note before we give out the wiring schematics. Please do not try installing this device if you are unsure of how electrical circuits operate within your home. As exciting as it is to have a smart switch installed, it can be dangerous and even life-threatening if you do not install this correctly. Please consult a qualified electrician if necessary. With that said, here are a few other warnings we'd like to point out for your safety:



Air-Gap Switch:
 Stay at right for normal use
 Shift to left for Bulb replacement

HOW TO INSTALL THE WIRES



- Unscrew: carefully turn the screw counterclockwise to leave enough space for the wire to be inserted. Do not unscrew the screws completely.
- Press down: Once loosened, use your finger so it catches the thread.
- Insert the wire: make sure the wire is completely straight, then insert it into the terminal while holding down the screw. Do not wrap the wire around the screw!
- Tighten: Turn the screw clockwise to tighten the wire. Make sure the wires are locked!

Note: There are 2 holes for each terminal can be used in the connection. You can use a jump wire or the second hole at the terminal to connect.

- Line (hot) — black (connected to power)
- Neutral — white
- Load — black (connected to lighting)
- Traveler — red/other (only in 3-way installations)

Note before installation

- The Wi-Fi In-wall Smart Switch must not exceed **150W LED, 500W** incandescent.
- The switch box required: 1-gang U.S. wall box. **3 1/2 in** deep recommended, **2 1/4 in** deep minimum. (The switch is designed only for use with permanently installed fixtures.)
- Work with **regular 3-way on/off** for 2 locations control. It can only be connected with regular 3-way on/off switch, **don't use a smart switch or a dimmer switch! Couldn't work with an add-on switch!**
- The colors of your wires may not match the ones in our diagrams so please make sure you've **identified all wires correctly** based on their source, not color only.
- Please check your original 3-way wiring circuit in your home before installation, and then **follow the wiring diagram option 1 or 2** in the manual.
- Install the smart switch in the switch box which directly connects to the power **Line and Neutral**.
- This switch **requires a Neutral for installation**, or the installation will not succeed.
- Not recommended for fan.

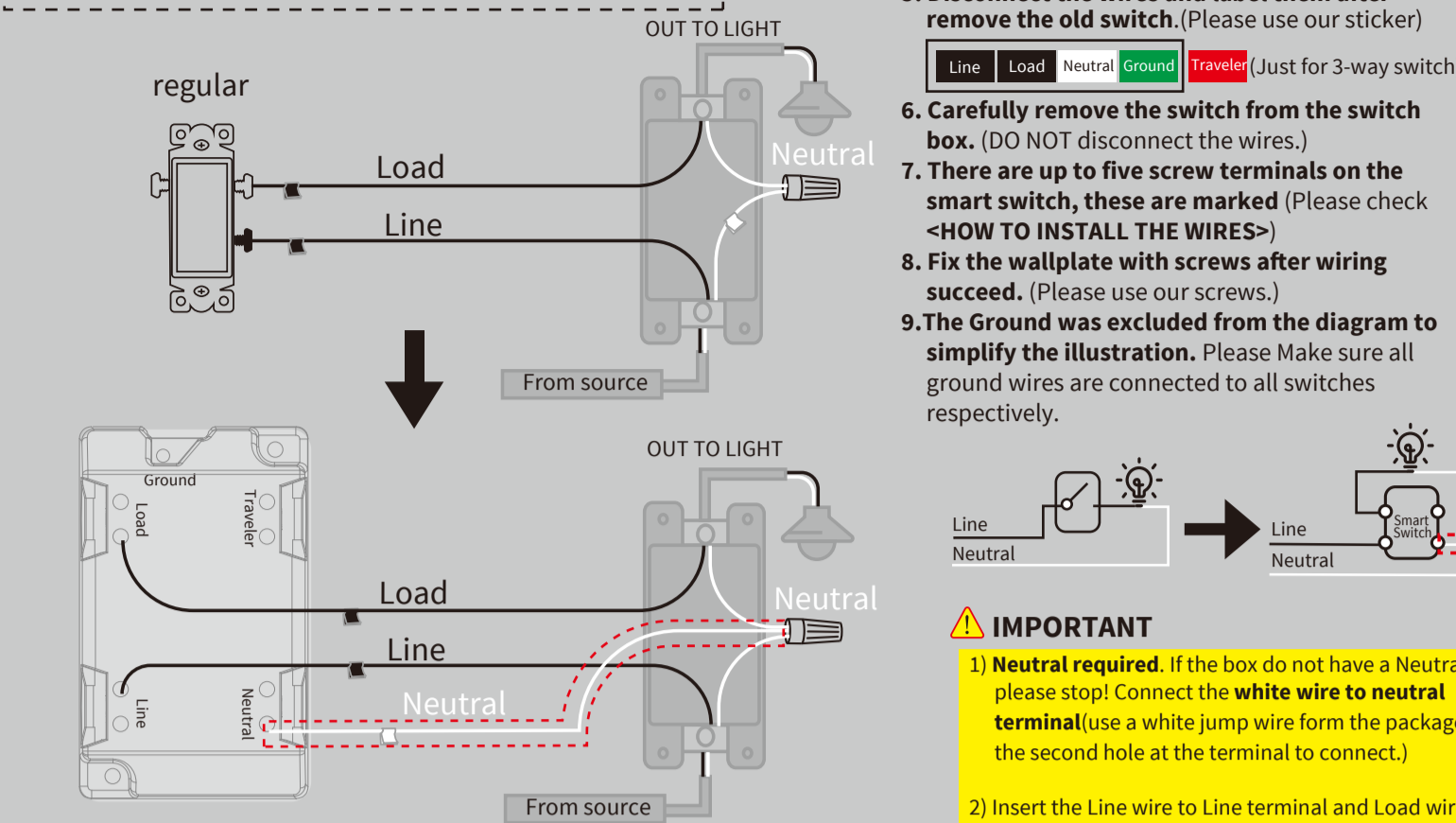
If you have any questions, please contact us at ask@nie-tech.com

Part 2. Wiring Diagram

Single-pole wiring



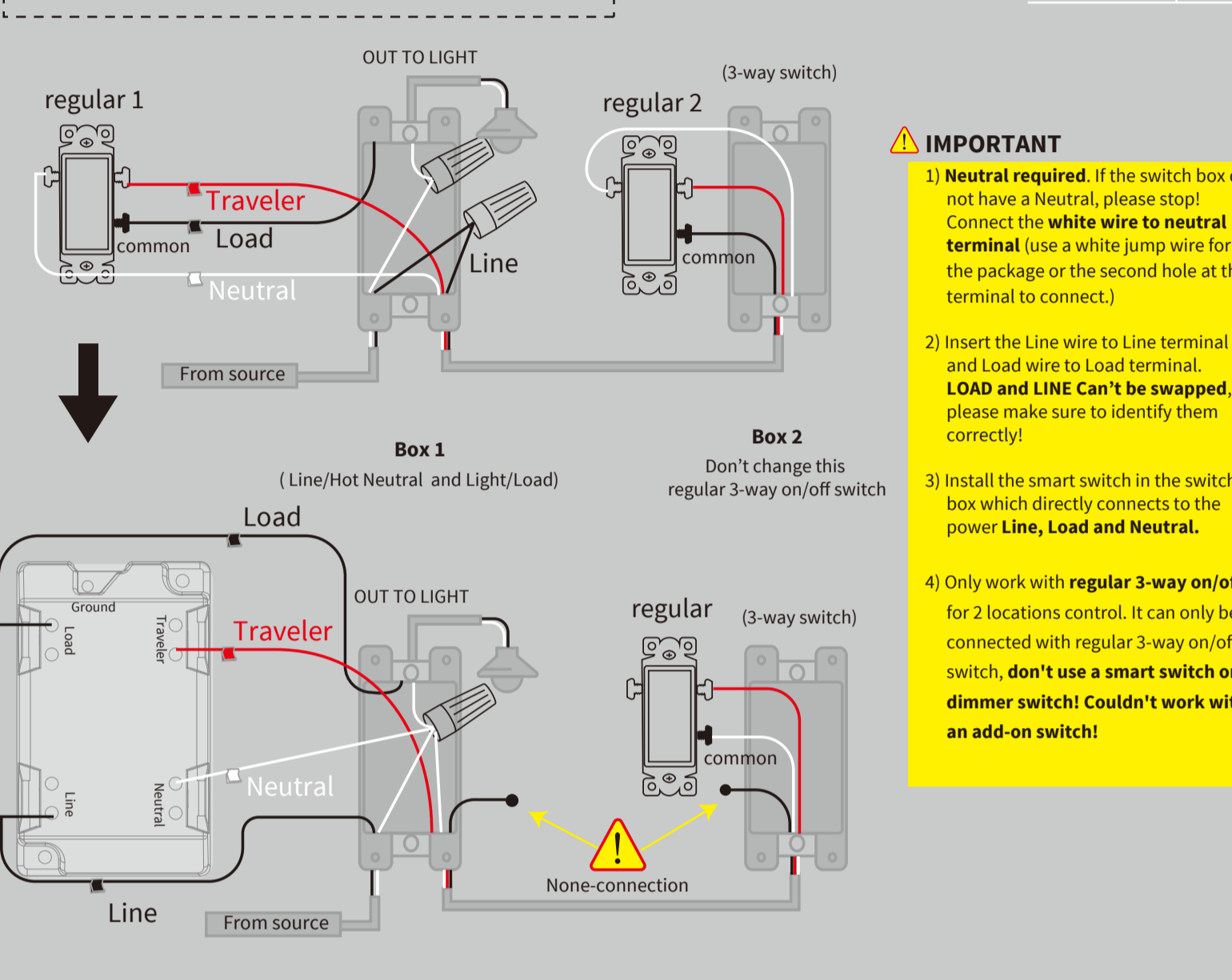
- Tool:** Please prepare a flat head screwdriver.
- Turn power OFF** at circuit breaker or fuse box.
- Remove wallplate.**
- Remove the switch mounting screws.**
- Disconnect the wires and label them after remove the old switch.** (Please use our sticker)
- Carefully remove the switch from the switch box.** (DO NOT disconnect the wires.)
- There are up to five screw terminals on the smart switch, these are marked** (Please check **<HOW TO INSTALL THE WIRES>**)
- Fix the wallplate with screws after wiring succeed.** (Please use our screws.)
- The Ground was excluded from the diagram to simplify the illustration.** Please Make sure all ground wires are connected to all switches respectively.



IMPORTANT

- Neutral required.** If the box do not have a Neutral, please stop! Connect the **white wire to neutral terminal** (use a white jump wire form the package or the second hole at the terminal to connect.)
- Insert the Line wire to Line terminal and Load wire to Load terminal. **LOAD and LINE Can't be swapped**, please make sure to identify them correctly!

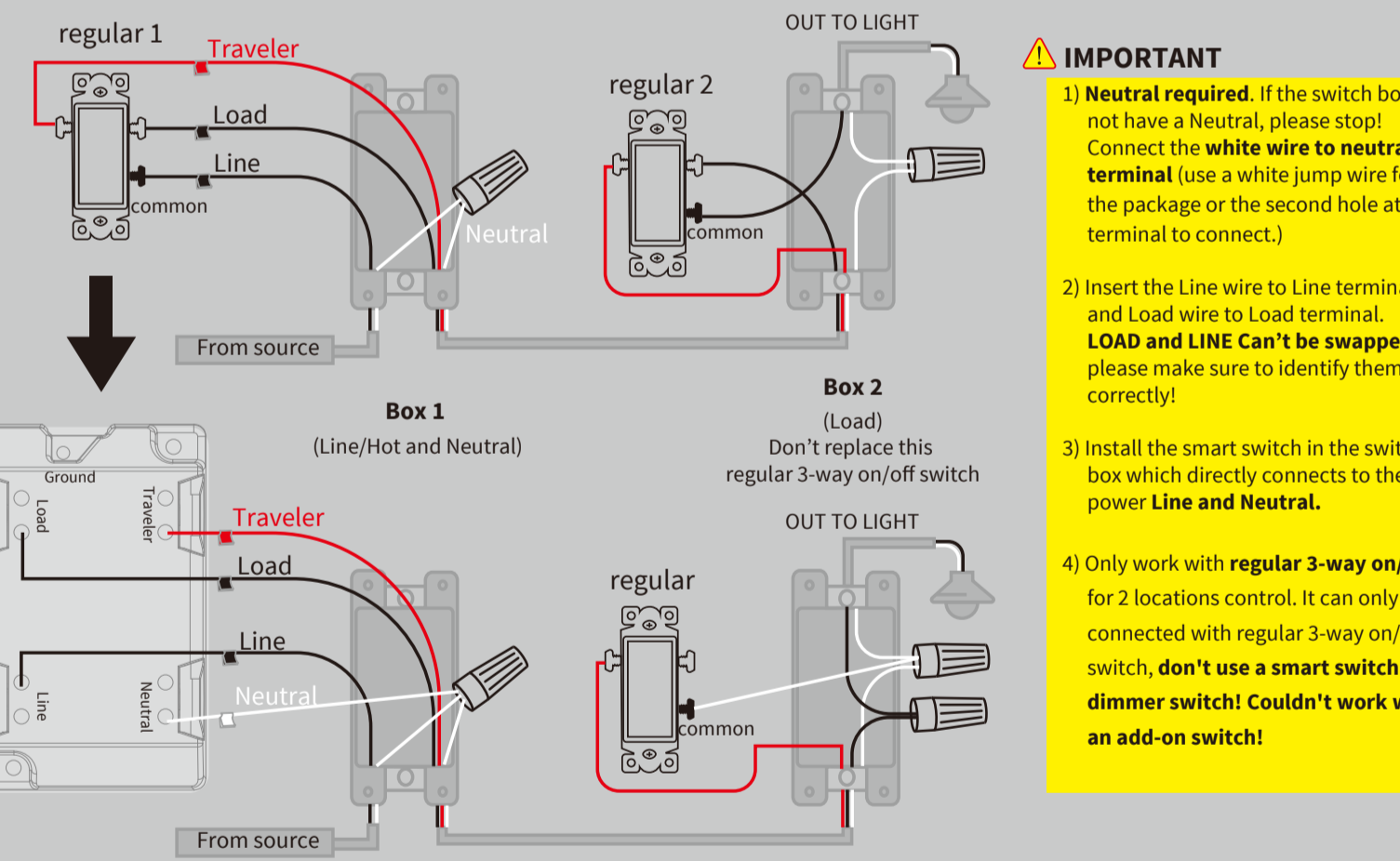
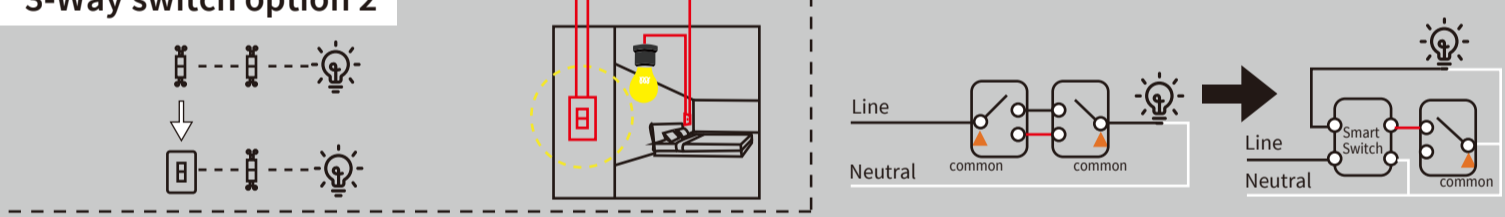
3-Way switch option 1



IMPORTANT

- Neutral required.** If the switch box do not have a Neutral, please stop! Connect the **white wire to neutral terminal** (use a white jump wire form the package or the second hole at the terminal to connect.)
- Insert the Line wire to Line terminal and Load wire to Load terminal. **LOAD and LINE Can't be swapped**, please make sure to identify them correctly!
- Install the smart switch in the switch box which directly connects to the power **Line, Load and Neutral**.
- Only work with **regular 3-way on/off** for 2 locations control. It can only be connected with regular 3-way on/off switch, **don't use a smart switch or a dimmer switch! Couldn't work with an add-on switch!**

3-Way switch option 2



IMPORTANT

- Neutral required.** If the switch box do not have a Neutral, please stop! Connect the **white wire to neutral terminal** (use a white jump wire form the package or the second hole at the terminal to connect.)
- Insert the Line wire to Line terminal and Load wire to Load terminal. **LOAD and LINE Can't be swapped**, please make sure to identify them correctly!
- Install the smart switch in the switch box which directly connects to the power **Line and Neutral**.
- Only work with **regular 3-way on/off** for 2 locations control. It can only be connected with regular 3-way on/off switch, **don't use a smart switch or a dimmer switch! Couldn't work with an add-on switch!**

Part 3. Manual Control



LED Indicator:
 Red: Network failure
 Blue: Network configuration mode
 Orange: Light status indicator
 Purple: AP Network configuration mode

- Tap 1 (Up button): turn on the light** (the last brightness level)
 Press and hold (Up button): add brightness
- Tap 1 (Down button): turn off the light**
 Press and hold ("down" button): reduce brightness.
- Adding your device to Wi-Fi network:**
 Please make sure the switch is on the "OFF" position. Hold the "down" button more than 10s until the bulb flashes and the "blue" LED blinks rapidly to initiate App-configured Mode.
- If you need to reset the device (Factory setting)**
Network reset
 1. Turn off the light (when the light is on)
 2. Hold the "down" button until the light bulb flashes (the blue LED blinks rapidly)

Part 4. APP Connection

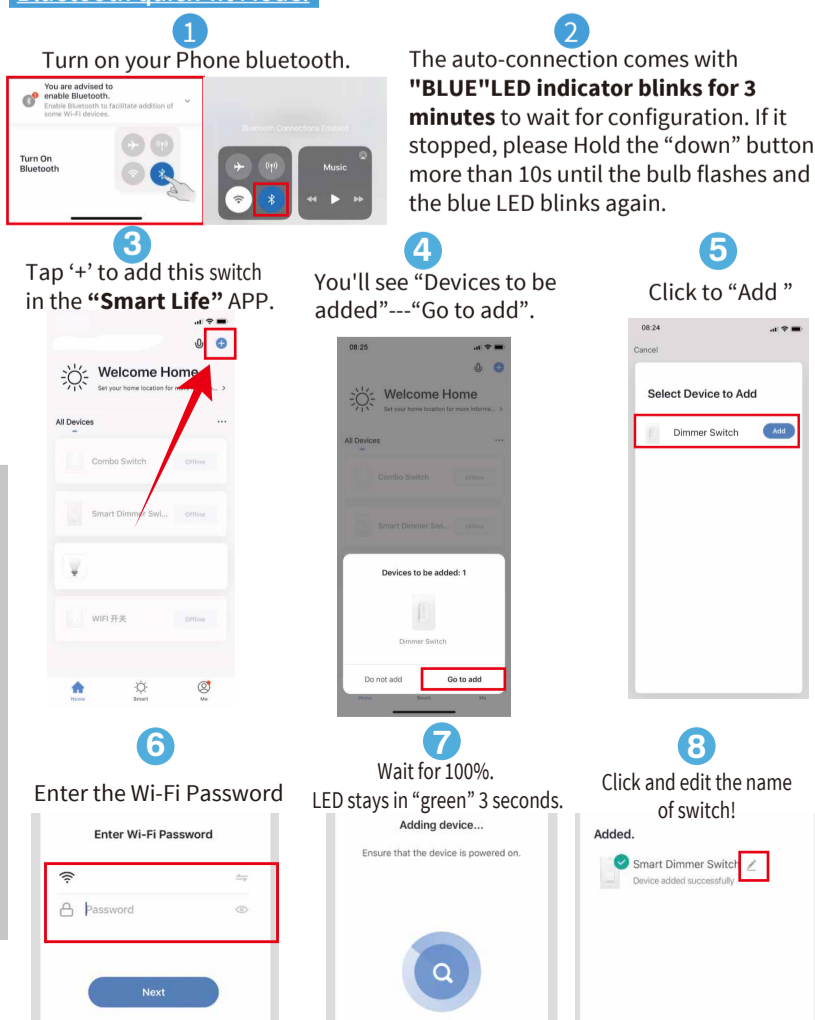
- Please scan the QR code to download the application "Smart Life".
- If you cannot download Smart Life app, please search "Smart Life" on Google Play (for Android phone) or Apple Store (for iOS phone) to download.
 After you download the Smart Life App and register a new account, please follow the instructions below to set up your smart switch.
- The smart switch can be also used with **Amazon Echo** and **Google Home**. Please scan the QR code below and follow the instructions if you have any trouble pairing with them.



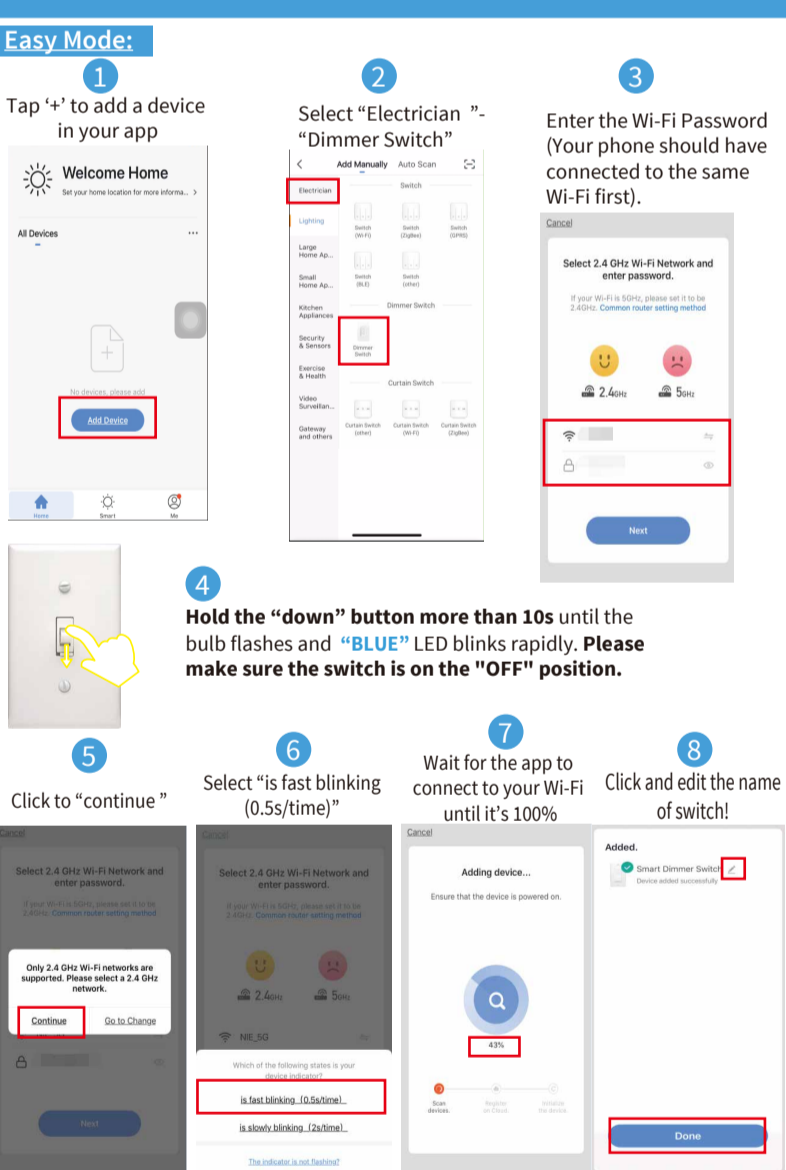
Please Note:

- Our products only support 2.4GHz Wi-Fi network.
- 3 connection network modes: **Bluetooth quick-fit Mode, Easy Mode, AP Mode.**
- Choose the most suitable mode to configure the network.
- Please operate quickly when "BLUE" LED indicator blinks rapidly.
- When indicator flash enters the network, complete standard operation within 30s
- "PURPLE" LED Flashing slowly enters AP Mode (select "AP Mode" follow the below instructions.)
- Make sure the switch works properly by manual control before network configuration.
- Device Reset / Network reset**
 step 1: turn off the light (when the light is on)
 step 2: hold the "Down" button until the light bulb flashes ("BLUE" LED blinks rapidly)

Bluetooth quick-fit Mode:



Part 4. APP Connection



AP mode:

- ⚠ If you cannot configure it by the default mode successfully, try to connect by AP mode.**
- When the **blue LED indicator** flashes quickly, press and hold the down button for more than 5s until the bulb flashes twice to enter the AP mode, and the **purple LED indicator** flashes quickly.
 - Click on **"is slowly blinking (2s/time)"** in the upper right corner.
 - Click "Confirm light flashes."
 - Enter Wi-Fi network password.
 - Open wireless LAN settings with **"SmartLife-xxxx/SL-xxxx"**.
 - Back in the application, continue adding devices and wait for the connection to complete.
- **AP Network Configuration Mode to Easy Mode:** When the **purple LED indicator** flashes quickly, press and hold the "down" button for more than 5s until the bulb flashes 1 time to enter easy mode, and the **blue LED indicator** flashes quickly.

Part 5. Network Configuration

- OPERATION GUIDE**
- Adding your device to Wi-Fi network:**
 Please make sure the switch is on the "OFF" position. Hold the "down" button more than 10s until the bulb flashes and "blue" LED indicator blinks rapidly to initiate App-configured Mode.
 - If you need to reset the device (Factory setting)**
Network reset
 1. Turn off the light (when the light is on)
 2. Hold the "down" button more than 10s until the bulb flashes ("blue" LED indicator blinks rapidly)

Part 6. Parameter Settings

- The LED indicator flashes 3 times after each parameter setting successfully.)
- LED Indicator Status Setting** (This parameter can access you to choose the led indicator to be on when the switch (light) is on/off, or LED indicator remains on/off all times.)
- Value=1 (default) LED is On when the switch (light) Off and LED is Off when the switch (light) On.
 - Value=2 LED is On when switch (light) On and LED is Off when the switch (light) Off.
 - Value=3 LED is always Off.
 - Value=4 LED is always On.
- Operation:** Quickly press "down" button 5 times.
Please note: the switching of each value is in order, a quick press "down" button 5 times will switch once. eg: Switching from value1 to value 4 needs 3 switchings.
- Restores State after Power Failure** (This parameter can access you to set the switch to be on/off after power failure.)
- Value=1 (default) The switch is off regardless of the state prior to power failure.
 - Value=2 The switch is on regardless of the state prior to power failure
 - Value=3 (default) Memory state before power failure This switch will be return to state prior to the power failure after power is restored.
- Operation:** Quickly press "up" button 5 times.
Please note: the switching of each value is in order, a quick press "up" button 5 times will switch once. eg: Switching from value1 to value 3 needs 2 switchings.
- Light off State Setting** (This parameter can access you to set the light fade out or off immediately.)
- Value=1 (default) Fade out
 - Value=2 Instantaneous off
- Operation:** Quickly press "up" button 8 times
Please note: the switching of each value is in order, a quick press "up" button 8 times will switch once. eg: Switching from value1 to value 2 needs 1 switching.
- Button Function Setting** (This parameter can access you to set the "up" button to turn the light on/off.)
- Value=1 (default) The "up" button turn the light on and "down" button turn lights off.
 - Value=2 The "up" button turn the light off and "down" button turn lights on.
- Operation:** Quickly press "down" button 8 times
Please note: the switching of each value is in order, a quick press "down" button 8 times will switch once. eg: Switching from value1 to value 2 needs 1 switching.

FCC
 This device complies with part 15 of the FCC and Industry Canada license-exempt RSS standard(s). Operation is subjected to the following two conditions:
 (1) This device may not cause harmful interference, and (2) this device must accept any interference received, including interference that may cause undesired operation.

FCC NOTE: The manufacturer is not responsible for any radio or TV interference caused by unauthorized modifications to this equipment. Such modifications could void the user's authority to operate the equipment.

- Reorient or relocate the receiving antenna.
- Increase the separation between the equipment and receiver.
- Connect the equipment into an outlet on a circuit different from that to which the receiver is connected.
- Consult the dealer or an experienced radio/TV technician for help.

NOTE: This equipment has been tested and found to comply with the limits for a Class B digital device, pursuant to Part 15 of the FCC Rules. These limits are designed to provide reasonable protection against harmful interference in a residential installation. This equipment generates, uses and can radiate radio frequency energy and, if not installed and used in accordance with the instructions may cause harmful interference to radio communications. However, there is no guarantee that interference will not occur in a particular installation. If this equipment does cause harmful interference to radio or television reception, which can be determined by turning the equipment off and on, the user is encouraged to try to correct the interference by one or more of the following measures:

Important note: To comply with the FCC RF exposure compliance requirements, no change to the antenna or the device is permitted. Any change to the antenna or the device could result in the device exceeding the RF exposure requirements and void user's authority to operate the device.

CAUTION - PLEASE READ!
 This device (WF31T) is intended for installation in accordance with the National Electric Code and local regulations in the United States, or the Canadian Electrical Code and local regulations in Canada. If you are unsure or uncomfortable about performing this installation consult a qualified electrician.

WARNING - SHOCK HAZARD
TURN OFF THE POWER to the circuit for the switch and lighting fixture at the service panel (circuit breaker) prior to installation. **ALL WIRING CONNECTIONS MUST BE MADE WITH THE POWER OFF** to avoid personal injury and/or damage to the switch.

OTHER WARNINGS
 Risk of Fire
 Risk of Electrical Shock
 Risk of Burns

SETTING
 For better performance of the LED, please set a minimum brightness value. When the bulb is at this minimum brightness value, the bulb does not flicker. The minimum brightness of different bulbs may be different.

