

EVALOGIK®

## 3-Way Wi-Fi Toggle ON/OFF Switch

• WF30TS •

### Meet your new smart switch !



Power: 120V AC, 60Hz  
Wireless Frequency: 2.4GHz  
Wireless Standard: IEEE802.11b/g/n  
Maximum Load: 8A  
Incandescent 500W  
LED 150W  
Resistive 1000W  
Temperature Range: 32° F~104° F  
Range: Up to 100 feet line of sight  
*For indoor use.*

## Contents

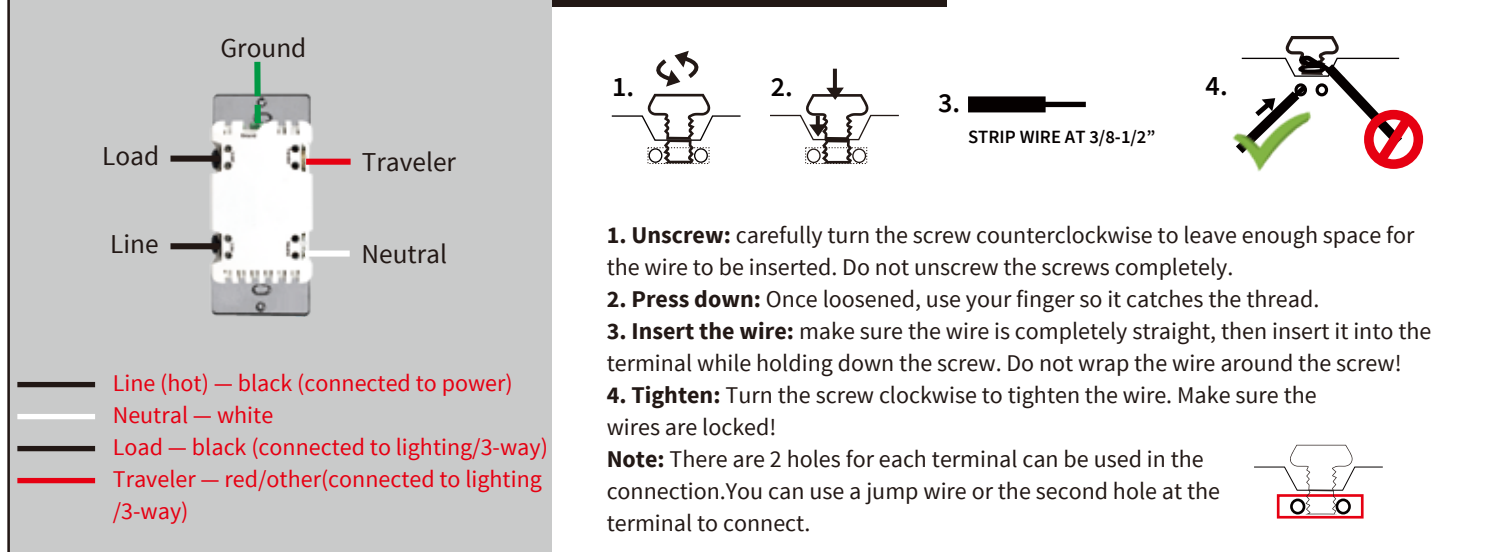
Convention	Description	Convention	Description
<b>Part 1. Installation</b>	<ul style="list-style-type: none"> <li>• Pre-installation preparation</li> <li>• Installation steps</li> </ul>	<b>Part 5. Network Configuration</b>	<ul style="list-style-type: none"> <li>• Adding your device to Wi-Fi network</li> </ul>
<b>Part 2. Wiring Diagram</b>	<ul style="list-style-type: none"> <li>• Wiring Instructions</li> <li>• single pole and 3-way wiring diagram</li> </ul>	<b>Part 6. Parameter Settings</b>	<ul style="list-style-type: none"> <li>• Function description</li> <li>• LED Indicator Status Setting</li> <li>• Restore State after Power Failure</li> <li>• Button Function Setting</li> </ul>
<b>Part 3. Manual Control</b>	<ul style="list-style-type: none"> <li>• LED Indicator/ Button function</li> <li>• Adding / reset the device ( Factory setting)</li> </ul>		
<b>Part 4. APP Connection</b>	<ul style="list-style-type: none"> <li>• Download the app</li> <li>• Add a device in your app</li> <li>• Work with Amazon Echo &amp; Google Home</li> <li>• If you cannot configure it by the default mode successfully, try to connect by AP mode.</li> </ul>		For more details, please refer to the manual parts. If you have any questions during installation, Please contact us <a href="mailto:ask@nie-tech.com">ask@nie-tech.com</a>

## Part 1. Installation

### \* A Few Quick Reminders

A quick note before we give out the wiring schematics. Please do not try installing this device if you are unsure of how electrical circuits operate within your home. As exciting as it is to have a smart switch installed, it can be dangerous and even life-threatening if you do not install this correctly. Please consult a qualified electrician if necessary. With that said, here are a few other warnings we'd like to point out for your safety:

### HOW TO INSTALL THE WIRES



### Note before installation

- 1) The Wi-Fi In-wall Smart Switch must not exceed Incandescent **500W** / LED **150W** / Resistive **1000W**.
- 2) Work with **regular 3-way on/off** for 2 locations control. It can only be connected with regular 3-way on/off switch, **don't use a smart switch or a dimmer switch! Couldn't work with an add-on switch!**
- 3) The colors of your wires may not match the ones in our diagrams so please make sure you've **identified all wires correctly** based on their source, not color only.
- 4) Please check your original 3-way wiring circuit in your home before installation, and then **follow the wiring diagram option 1 or 2** in the manual.
- 5) Install the smart switch in the switch box which directly connects to the power **Line and Neutral**.
- 6) This switch **requires a Neutral for installation**, or the installation will not succeed.
- 7) Not recommended for fan.

If you have any questions, please contact us at [ask@nie-tech.com](mailto:ask@nie-tech.com)

1. **Tool:** Please prepare a flat head screwdriver.
2. **Turn power OFF at circuit breaker or fuse box.**

3. **Remove wallplate.**
4. **Remove the switch mounting screws.**
5. **Disconnect the wires and label them after remove the old switch.** (Please use our sticker)

Line Load Neutral Ground Traveler (Just for 3-way switch)

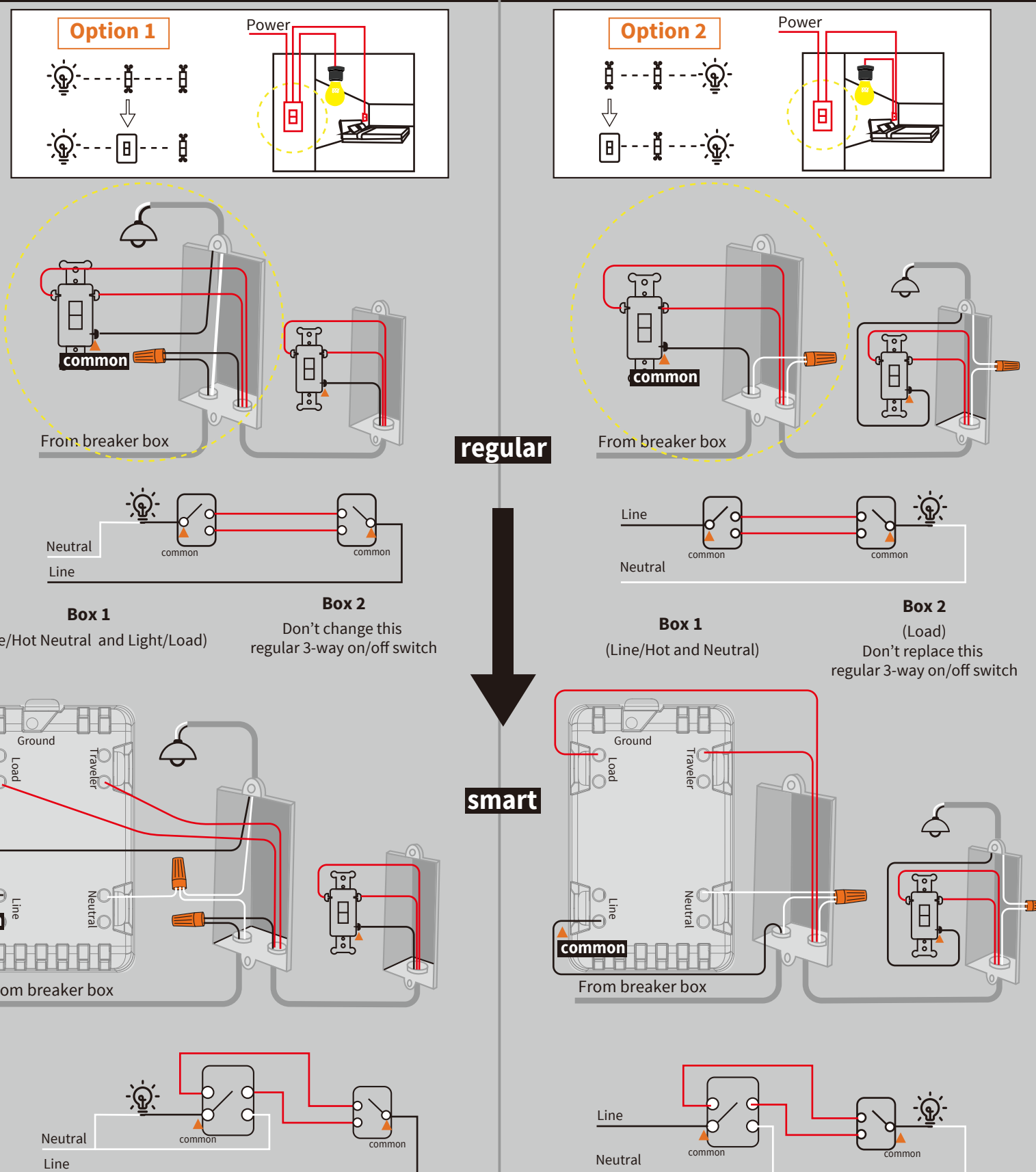
6. **Carefully remove the switch from the switch box.** (DO NOT disconnect the wires.)
7. **There are up to five screw terminals on the smart switch, these are marked** (Please check **<HOW TO INSTALL THE WIRES>**)

8. **Fix the wallplate with screws after wiring succeed.** (Please use our screws.)
9. **The Ground was excluded from the diagram to simplify the illustration.** Please Make sure the ground wires connected to the switches respectively.

### NOTE:

- 1) **Neutral required.** If the switch box do not have a Neutral, please stop! Connect the **white wire to neutral terminal** (use a white jump wire form the package or the second hole at the terminal to connect.)
- 2) Before the old switch detached, please identify **the common terminal**.
- 3) Only work with **regular 3-way on/off** for 2 locations control. It can only be connected with regular 3-way on/off switch, **don't use a smart switch or a dimmer switch! Couldn't work with an add-on switch!**

### Please check which option is best for your 3-way installation.



## Part 3. Manual Control



### LED Indicator:

- Red: Network failure
- Blue: Network configuration mode
- Orange: Light status indicator
- Purple: AP Network configuration mode

- 1) Tap 1 (Up toggle): turn on the light
- 2) Tap 1 (Down toggle): turn off the light
- 3) Adding your device to Wi-Fi network:  
Please make sure the switch is on the "OFF" position.  
Hold the "down" toggle more than 5s until the bulb flashes and the blue LED blinks rapidly to initiate App-configured Mode.
- 4) If you need to reset the device ( Factory setting)  
**Network reset**  
1. Turn off the light (when the light is on)  
2. Hold the "down" toggle until the bulb flashes ( the blue LED blinks rapidly)

## Part 4. APP Connection

1. Please scan the QR code to download the application "Smart Life".
2. If you cannot download Smart Life app, please search "Smart Life" on Google Play (for Android phone) or Apple Store (for iOS phone) to download.

After you download the Smart Life App and register a new account, please follow the instructions below to set up your smart switch.

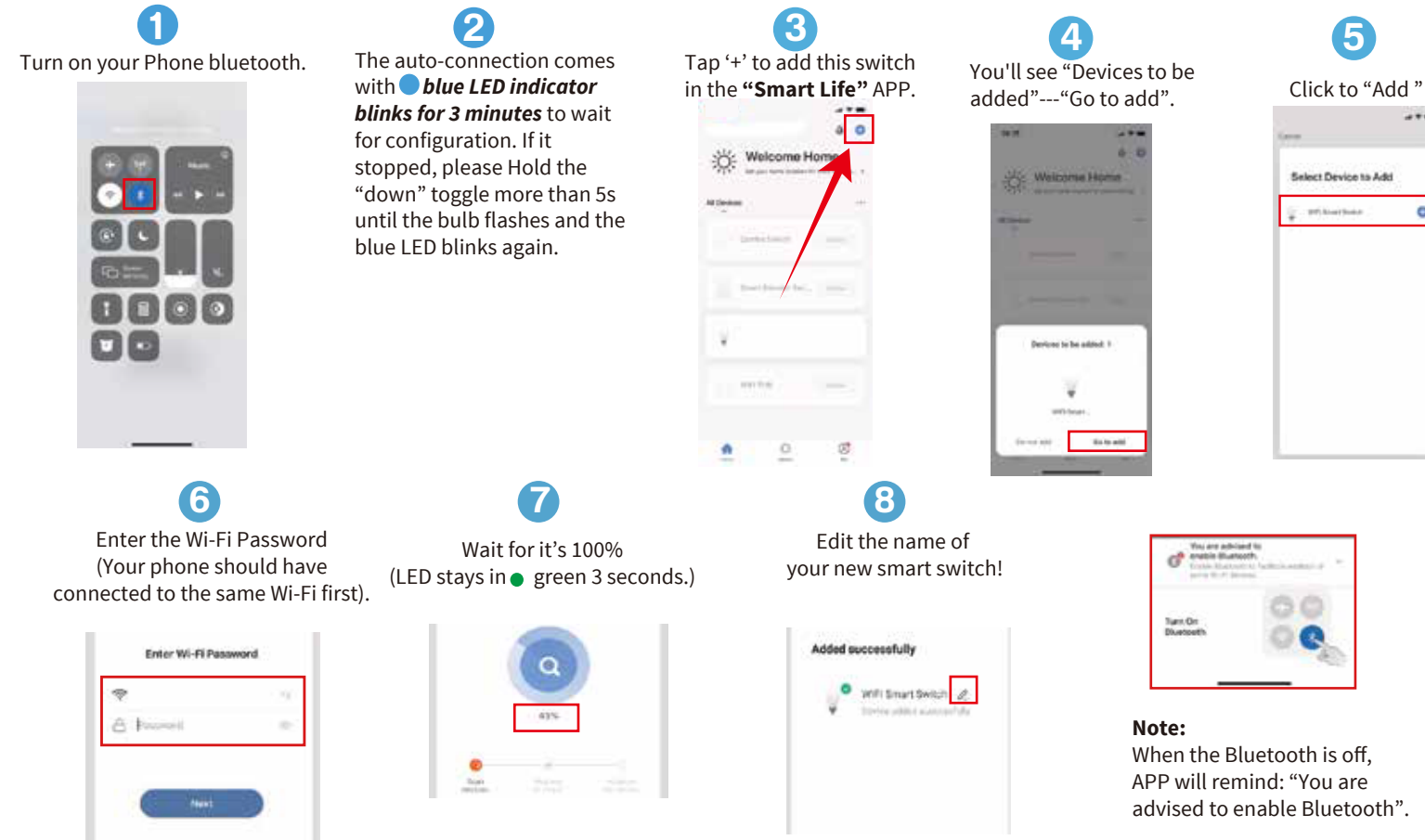
3. The smart switch can be also used with **Amazon Echo** and **Google Home**. Please scan the QR code below and follow the instructions if you have any trouble pairing with them.



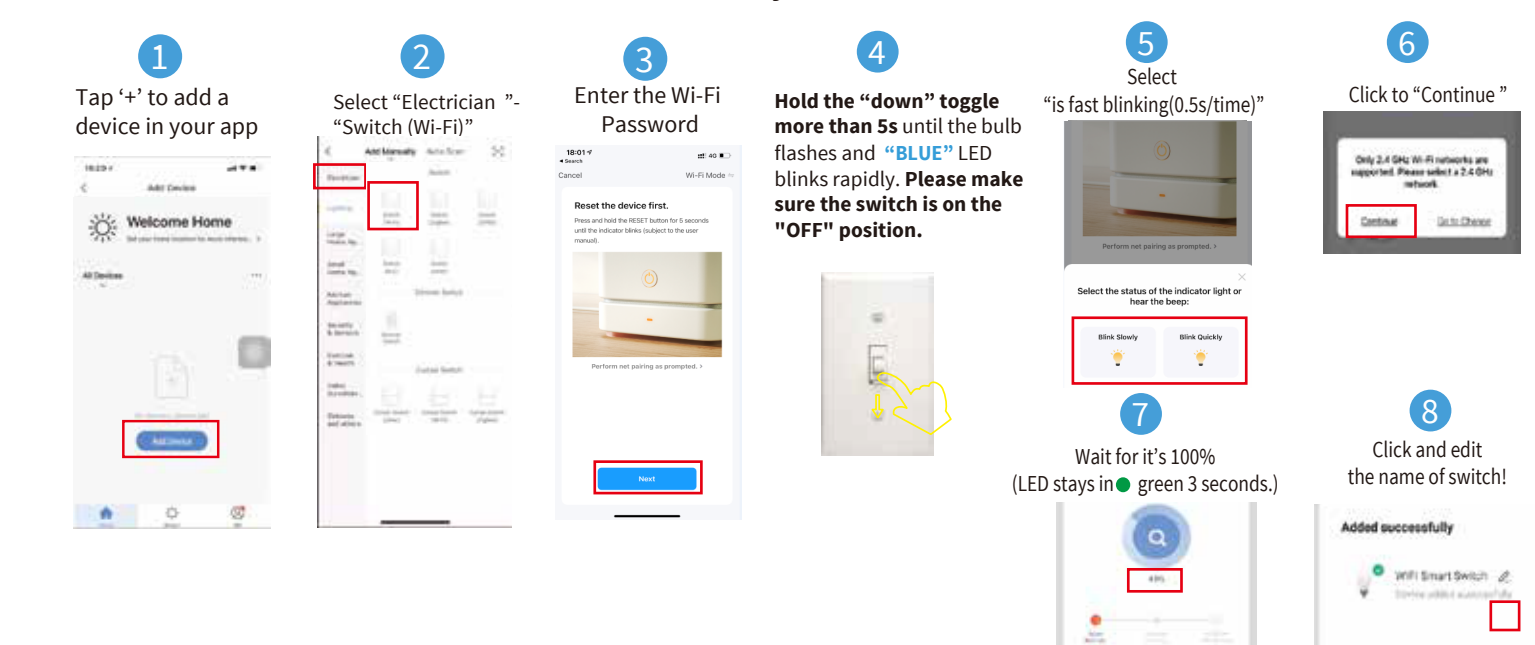
### Note:

- 1) Our products only support 2.4GHz Wi-Fi network.
- 2) 3 connection network modes: **Bluetooth quick-fit Mode, Easy Mode, AP Mode**. Choose the most suitable mode to configure the network.
- 3) Please operate quickly when blue LED indicator blinks rapidly.
- 4) When indicator flash enters the network, complete standard operation within 30s.
- 5) Purple LED Flashing slowly enters AP Mode (select "AP Mode" follow the below instructions).
- 6) Make sure the switch works properly by manual control before network configuration.
- **Device Reset** / Network reset  
step 1: turn off the light (when the light is on)  
step 2: hold the "Down" toggle until the light bulb flashes ( blue LED blinks rapidly)

### Bluetooth Quick-Fit Mode



### Easy Mode



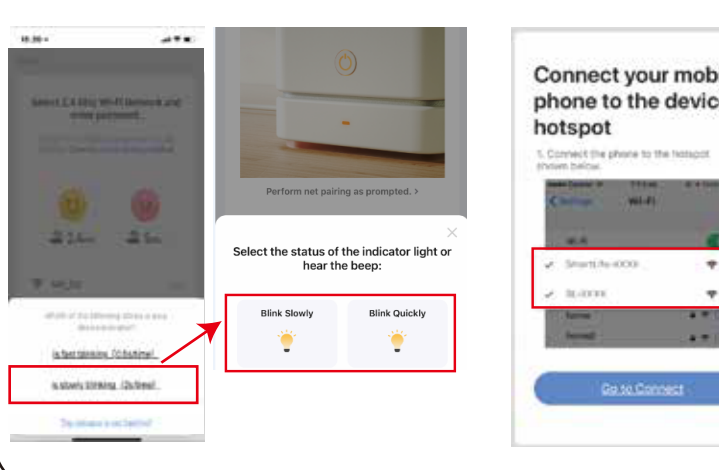
## Part 4. APP Connection

### AP Mode

- 1) If you cannot successfully configure the default mode, try connecting to AP mode.

- 1) Click on "AP Mode" in the upper right corner.
- 2) When the blue LED indicator flashes quickly, press and hold the off button (default is the down button) for more than 5s until the bulb flashes twice to enter the AP mode, and the purple LED indicator flashes quickly.
- 3) Click "Confirm light flashes."
- 4) Enter Wi-Fi network password.
- 5) Open wireless WLAN settings with "SmartLife-xxxx".
- 6) Back in the application, continue adding devices and wait for the connection to complete.

— **AP Network configuration mode to Easy Mode:** When the purple LED indicator flashes quickly, press and hold the "down" toggle for more than 5s until the bulb flashes 1 time to enter easy mode, and the blue LED indicator flashes quickly.



## Part 5. Network Configuration

### OPERATION GUIDE

- Adding your device to Wi-Fi network:  
Please make sure the switch is on the "OFF" position.  
Hold the "down" toggle more than 5s until the bulb flashes and "blue" LED indicator blinks rapidly to initiate App-configured Mode.
- If you need to reset the device ( Factory setting)  
**Network reset**  
1. Turn off the light (when the light is on)  
2. Hold the "down" toggle more than 5s until the bulb flashes ("blue" LED indicator blinks rapidly)

## Part 6. Parameter Settings

- **LED Indicator Status Setting** (This parameter can access you to choose the LED indicator to be on when the switch (light) is on/off, or LED indicator remains on/off all times.)  
Value=1 (default) LED is On when the switch (light) Off and LED is Off when the switch (light) On.  
Value=2 LED is On when switch (light) On and LED is Off when the switch (light) Off.  
Value=3 LED is always On.  
Value=4 LED is always Off.
- **Operation:** Quickly press "down" toggle 5 times.  
**Please note:** the switching of each value is in order, a quick press "down" toggle 5 times will switch once. eg: Switching from value1 to value 4 needs 3 switchings.
- **Restores State after Power Failure** (This parameter can access you to set the switch to be on/off after power failure.)  
Value=1 The switch is on regardless of the state prior to power failure.  
Value=2 The switch is off regardless of the state prior to power failure.  
Value=3 (default) Memory state before power failure This switch will be return to state prior to the power failure after power is restored.
- **Operation:** Quickly press "up" toggle 5 times.  
**Please note:** the switching of each value is in order, a quick press "up" toggle 5 times will switch once. eg: Switching from value1 to value 3 needs 2 switchings.
- **Button Function Setting** (This parameter can access you to set the "up" button to turn the light on/off.)  
Value=1 (default) The "up" toggle turn the light on and "down" toggle turn lights off.  
Value=2 The "up" toggle turn the light off and "down" toggle turn lights on.
- **Operation:** Quickly press "down" toggle 8 times  
**Please note:** the switching of each value is in order, a quick press "down" toggle 8 times will switch once. eg: Switching from value1 to value 2 needs 1 switching.

**FCC** This device complies with part 15 of the FCC and Industry Canada license-exempt RSS standard(s). Operation is subjected to the following two conditions:

- (1) this device may not cause harmful interference, and (2) this device must accept any interference received, including interference that may cause undesired operation.

**FCC NOTE:** The manufacturer is not responsible for any radio or TV interference caused by unauthorized modifications to this equipment. Such modifications could void the user's authority to operate the equipment.

- Reorient or relocate the receiving antenna.
- Increase the separation between the equipment and receiver.
- Connect the equipment into an outlet on a circuit different from that to which the receiver is connected.

**NOTE:** This equipment has been tested and found to comply with the limits for a Class B digital device, pursuant to Part 15 of the FCC Rules. These limits are designed to provide reasonable protection against harmful interference in a residential installation. This equipment generates, uses and can radiate radio frequency energy and, if not installed and used in accordance with the instructions may cause harmful interference to radio communications. However, there is no guarantee that interference will not occur in a particular installation. If this equipment does cause harmful interference to radio or television reception, which can be determined by turning the equipment off and on, the user is encouraged to try to correct the interference by one or more of the following measures:

**Important note:** To comply with the FCC RF exposure compliance requirements, no change to the antenna or the device is permitted. Any change to the antenna or the device could result in the device exceeding the RF exposure requirements and void user's authority to operate the device.

### CAUTION - PLEASE READ!

This device is intended for installation in accordance with the National Electric Code and local regulations in the United States, or the Canadian Electrical Code and local regulations in Canada. If you are unsure or uncomfortable about performing this installation consult a qualified electrician.

### WARNING - SHOCK HAZARD

**TURN OFF THE POWER** to the circuit for the switch and lighting fixture at the service panel (circuit breaker) prior to installation. **ALL WIRING CONNECTIONS MUST BE MADE WITH THE POWER OFF** to avoid personal injury and/or damage to the switch.

### OTHER WARNINGS

- Risk of Fire
- Risk of Electrical Shock
- Risk of Burns

V1.0

If you have any questions, Please contact us at [ask@nie-tech.com](mailto:ask@nie-tech.com)  
[www.nie-tech.com](http://www.nie-tech.com)