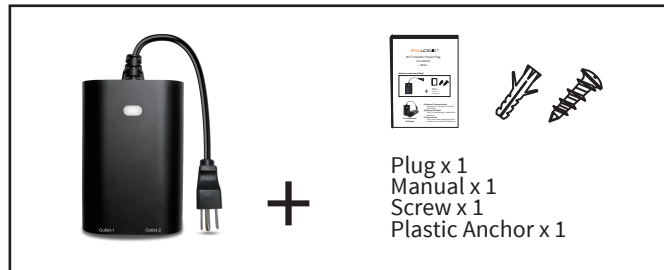


Wi-Fi Outdoor Smart Plug (2 outlets)

• WF96 •

Meet your new smart Plug !



**For outdoor use
IP65 Rated**

(A) Manual / Program button

Single press: manually turn on/off your device.

(B) Smart Outlet

This is your smart outlet that will be included in your smart home

(C) Always On Outlet

This is a "pass-through" outlet that is always on

Introduction

The EVA LOGIK WF96 is an enabled 15A outdoor smart plug designed for use for most residential lighting and motor applications. It's compatible with LED, halogen, incandescent, xenon, fluorescent and compact fluorescent bulbs. Works with Amazon Alexa, Google Assistant and IFTTT.

Overload protection and no hub required.

One smart outlet, you can use free App, or voice control by Alexa and Google Assistant to operate your devices in your home.

One bypass outlet for standard use.

Total load capacity for both outlets is 15A(1800W) Resistive.

Specifications

Model: WF96

Power: 120V AC, 60Hz

Loading :15 Amp Max Always On Outlet

15 Amp Max Smart Outlet

Total(Both Outlets) : 15 Amp Max

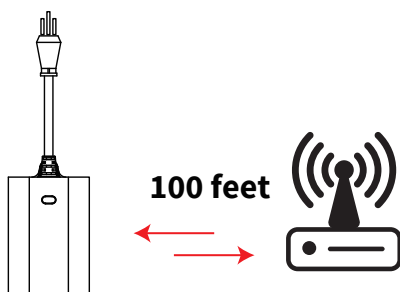
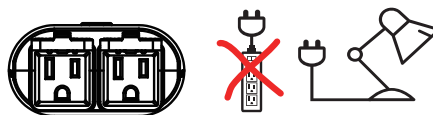
Operating Temperature Range: -4-122° F (-20-50° C)

Wireless Frequency: 2.4GHz

Wireless Standard: IEEE802.11b/g/n

Plug the light you want to control into the Smart plug controlled outlet.

NOTE: Plug directly into the outlet, do not use with extension cords



Note:

Your device may need to be within 100 feet of the controller to be included. If so, include the device to the network within 10 feet of the controller and relocate it to the desired position in your home. Be sure to refresh the network if the device is included in this manner.



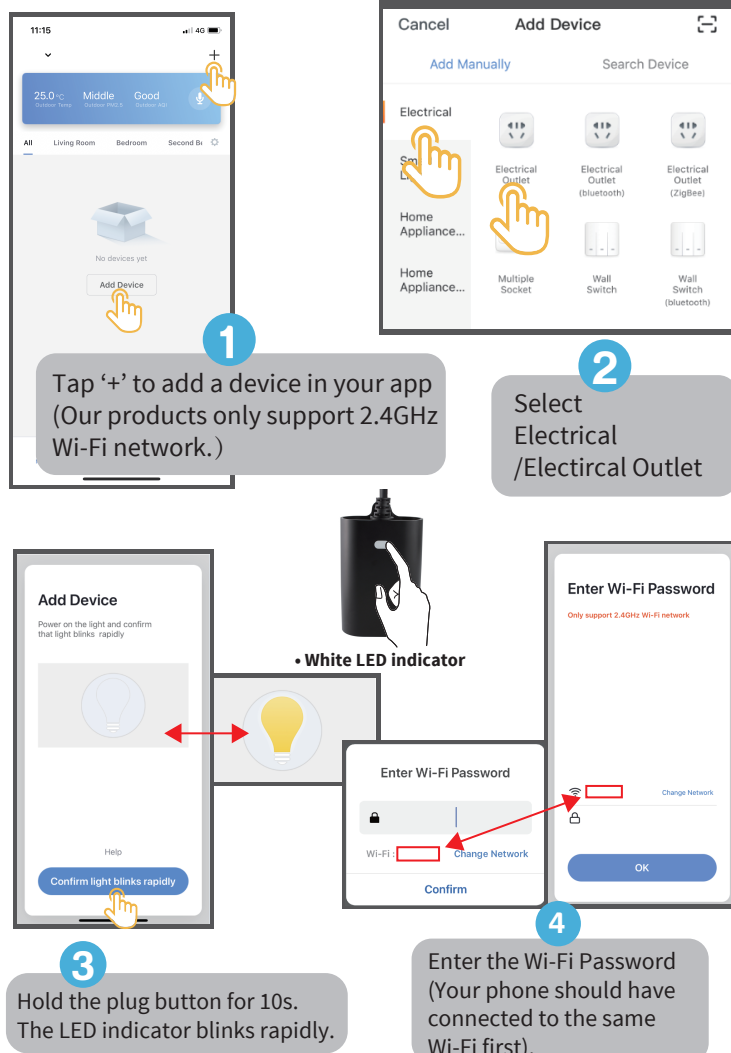
QR code

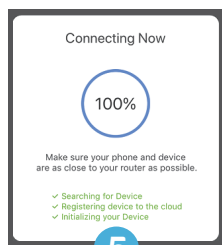


Smart Life

1. Please scan the QR code to download the application "Smart Life".
2. If you cannot download Smart Life app, please search "Smart Life" on Google Play (for Android phone) or Apple Store (for iOS phone) to download.

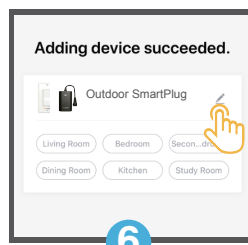
After you download the Smart Life App and register a new account, please follow the instructions below to set up your smart switch.





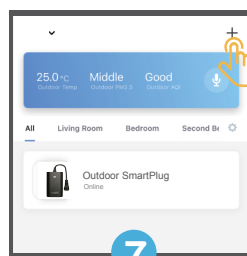
5

Wait for the app to connect to your WIFI until it's 100%



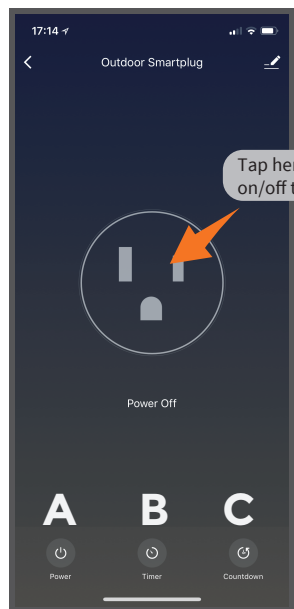
6

Edit the name of your new smart plug!

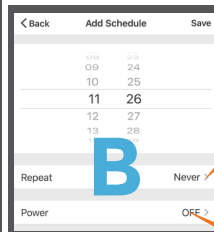
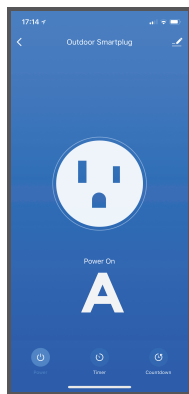


7

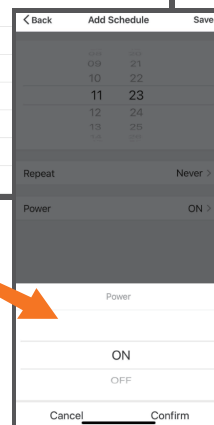
Click the new smart plug you just added and you can start using it now.



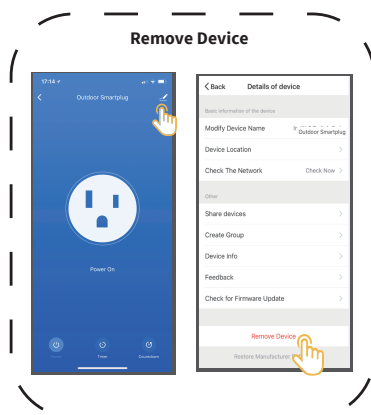
Tap here to turn on/off the PLUG



B



- Tap "A" to turn on/off the PLUG.
- Tap "B" to set a timer to the switch.
- Tap "C" to set a Countdown time to the switch.



3. The smart switch can be also used with **Amazon Echo** and **Google Home**. Please scan the QR code below and follow the instructions if you have any trouble pairing with them.



Amazon-Echo



Google-Home

Note:

- 1) Our products only support 2.4GHz Wi-Fi network.
- 2) Please operate quickly when the LED indicator blinks rapidly.
- 3) When indicator flash enters the network, complete standard operation within the 30s.



CAUTION - PLEASE READ!



This device (WF96) is intended for installation in accordance with the National Electric Code and local regulations in the United States, or the Canadian Electrical Code and local regulations in Canada. If you are unsure or uncomfortable about performing this installation consult a qualified electrician.



MEDICAL EQUIPMENT



Please DO NOT use this plug to control Medical or Life Support equipment. This device should never be used to control the On/Off status of Medical and/or Life Support equipment.



OTHER WARNINGS



Risk of Fire
Risk of Electrical Shock
Risk of Burns