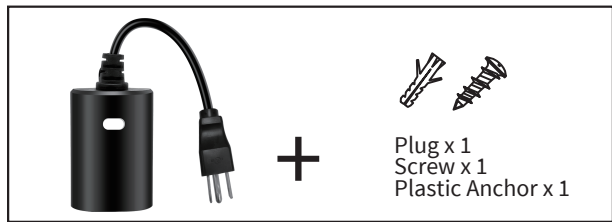




Wi-Fi Outdoor Smart Plug

WF96SH

Meet your new smart Plug !



IMPORTANT!

This unit is suitable for outdoor use in damp locations.
Do not expose to rain or immerse in water.

(A) Manual / Program button

Single press: manually turn on/off your device.

(B) Smart Outlet

This is your smart outlet that will be included in your smart home.

(C) Protector

Insert in connector when not in use.

For outdoor use

Note:

- Our products support Bluetooth quick-fit and 2.4GHz Wi-Fi network.
- Please operate quickly when the white LED indicator blinks rapidly.
- When indicator flash enters the network, complete standard operation within 3 minutes.
- If you failed to connect with Wi-Fi network, please try to operate several times more.

Introduction

The EVALOGIK WF96SH is an enabled 15A (1875W) Resistive outdoor smart plug designed for use seasonal and landscape lighting, porch light, fountains, pumps and other indoor and outdoor plug-in appliances. It's compatible with LED, halogen, incandescent, xenon, fluorescent and compact fluorescent bulbs. Work with Amazon Alexa, Google Assistant. You can use free Appor voice control by Alexa and Google Assistant to operate your devices in your home.

Specifications

Model: WF96SH

Power: 125VAC, 60Hz

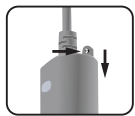
Item Size: 56*80*39mm

Loading: 15A 1875W RESISTIVE OR GENERAL PURPOSE 5A MAX

Wireless Frequency: 2.4GHz

Wireless Standard: IEEE802.11 b/g/n

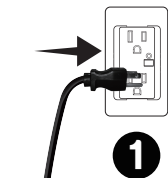
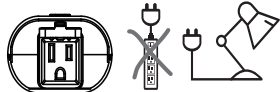
Operating Temperature: -4° F~122° F



Use our screws and anchor to lock it in the wall.(optional)

Plug the light you want to control into the Smart plug controlled outlet.

NOTE: Plug directly into the outlet, do not use with extension cords.

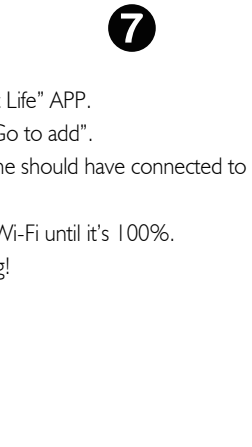
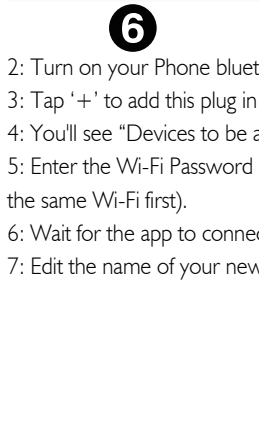
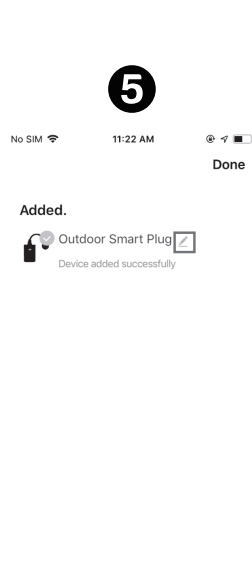
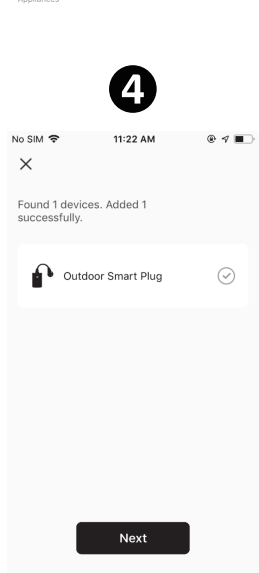
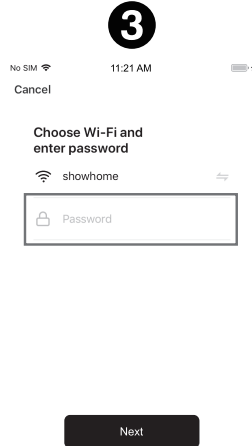
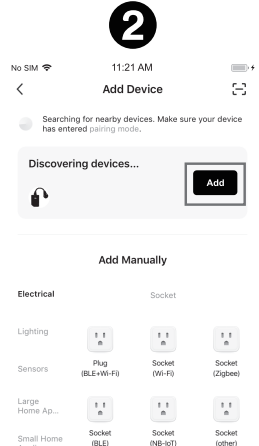
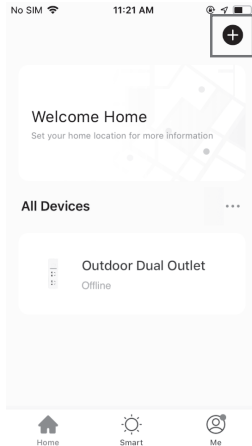
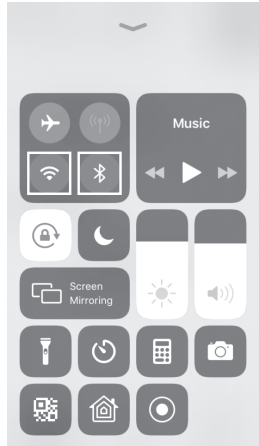


1: Plug-in the device directly to the wall outlet.

Once plugged in, it will enter into the Bluetooth auto-connection mode.

• White LED indicator

The auto-connection comes with LED blinks. The LED will blink 3 minutes. If it stopped, please hold the button 5 seconds until the LED blinks again.



2: Turn on your Phone bluetooth.

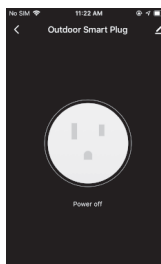
3: Tap '+' to add this plug in the "Smart Life" APP.

4: You'll see "Devices to be added"---"Go to add".

5: Enter the Wi-Fi Password (Your phone should have connected to the same Wi-Fi first).

6: Wait for the app to connect to your Wi-Fi until it's 100%.

7: Edit the name of your new smart plug!

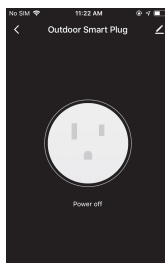
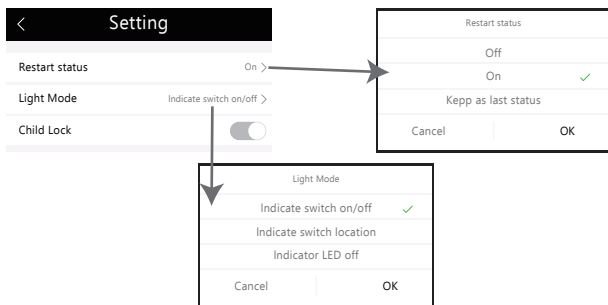


SETTING

1: Restart status: This parameter can access you to set the plug to be on/off after power failure.

2: Light mode: This parameter can access you to choose the led indicator to be on when the plug is on/off, or LED indicator remains on/off all times.

3: Child lock: When the child lock function is ON, any other operation keys will temporarily lose their control functions.



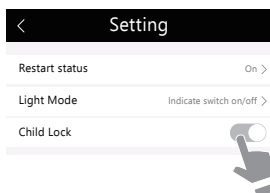
Child lock

Unlock operation: click

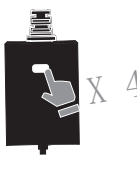
unlock on the APP or press

the device button 4 times

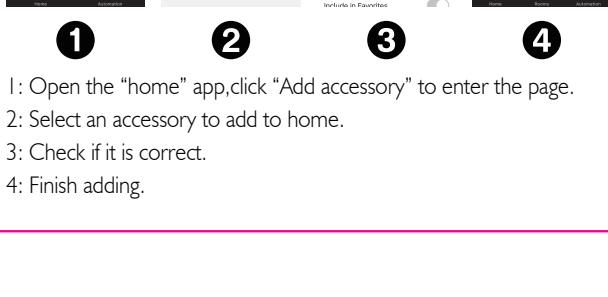
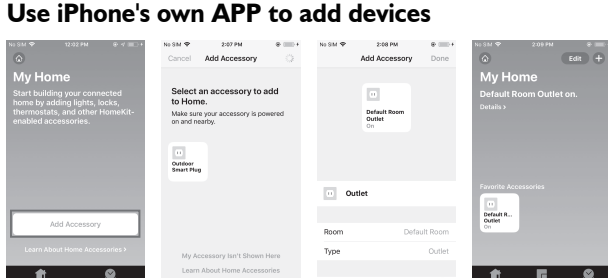
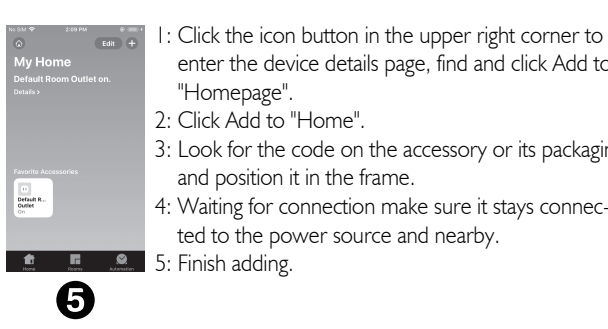
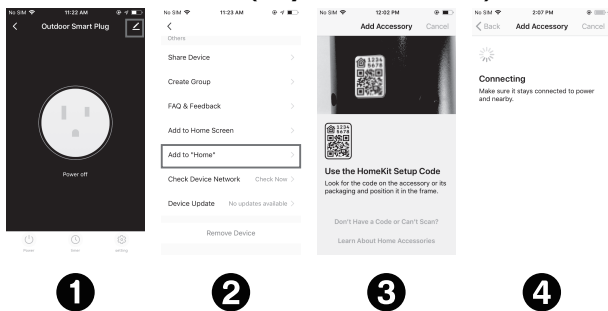
quickly.



or



Add device to Home (only for iPhone/iPad)



1

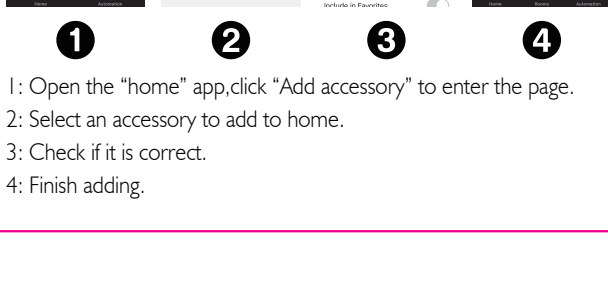
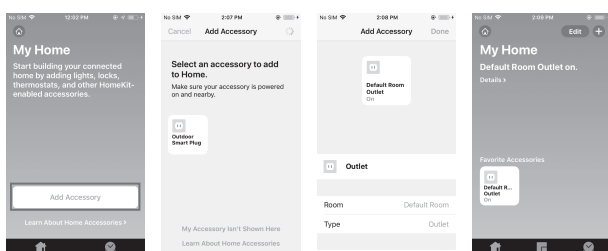
2

3

4

5

Use iPhone's own APP to add devices



1

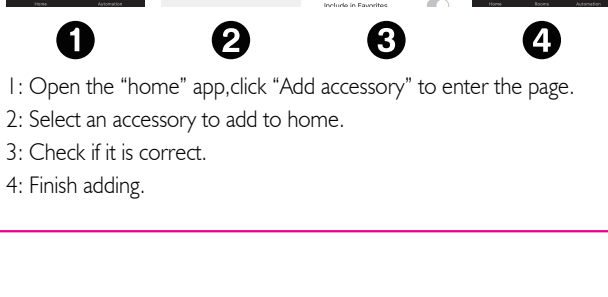
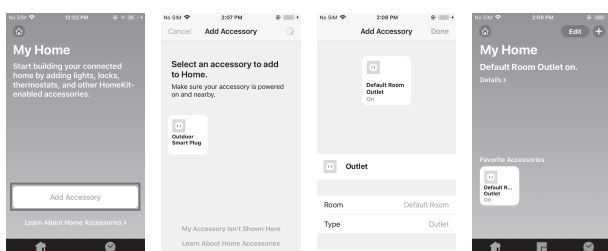
2

3

4

5

Use iPhone's own APP to add devices



1

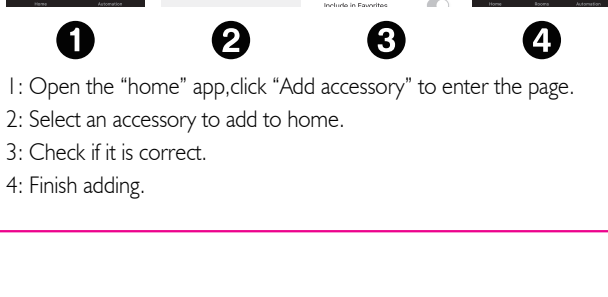
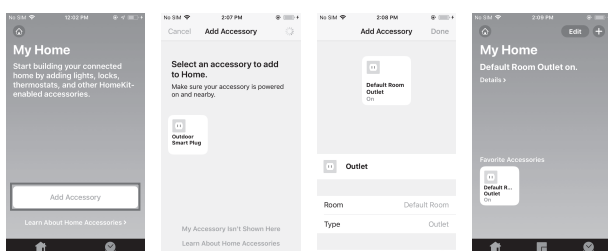
2

3

4

5

Use iPhone's own APP to add devices



1

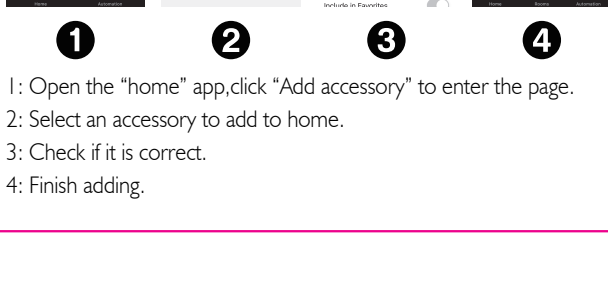
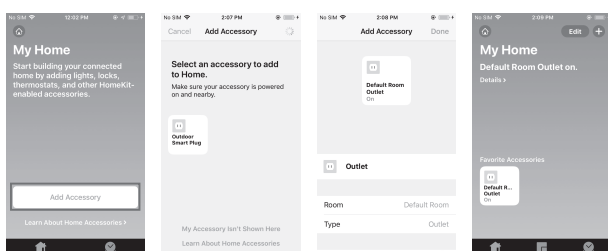
2

3

4

5

Use iPhone's own APP to add devices



1

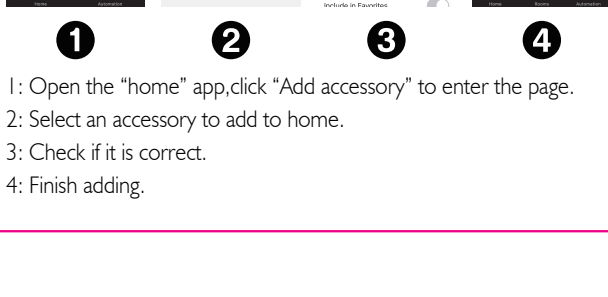
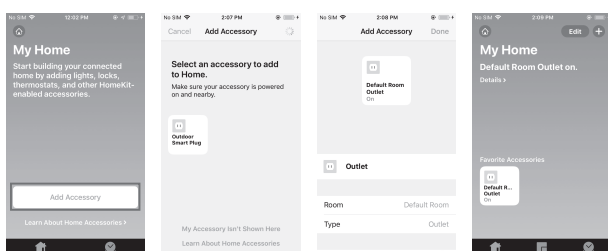
2

3

4

5

Use iPhone's own APP to add devices



1

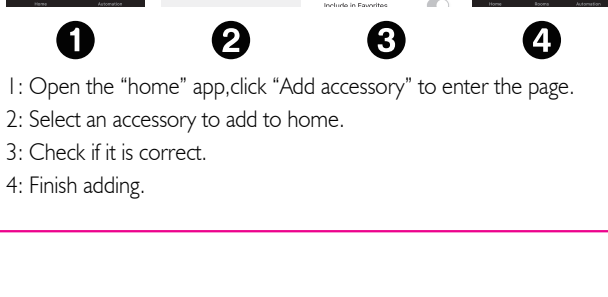
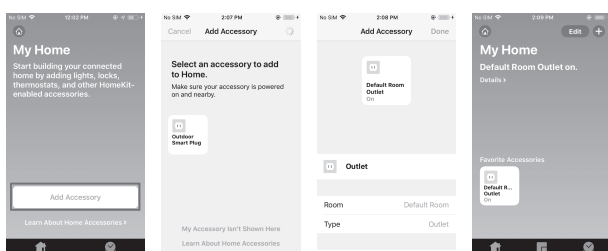
2

3

4

5

Use iPhone's own APP to add devices



1

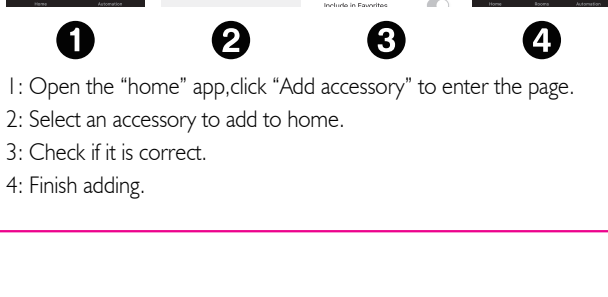
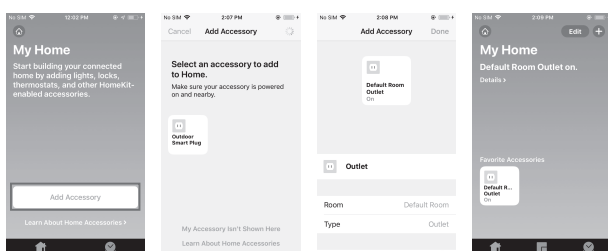
2

3

4

5

Use iPhone's own APP to add devices



1

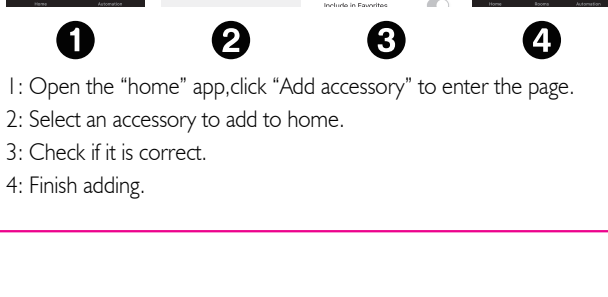
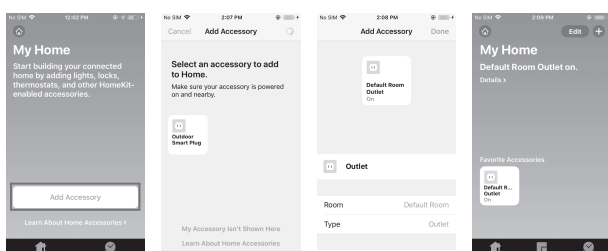
2

3

4

5

Use iPhone's own APP to add devices



1

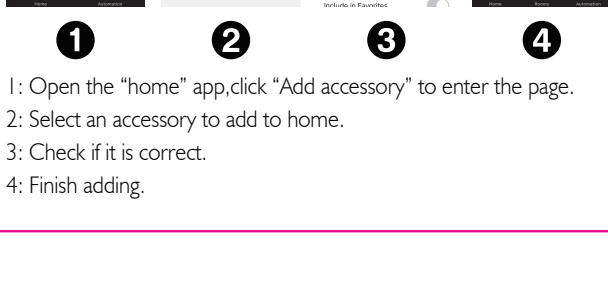
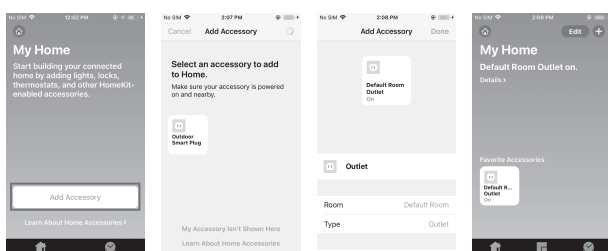
2

3

4

5

Use iPhone's own APP to add devices



1

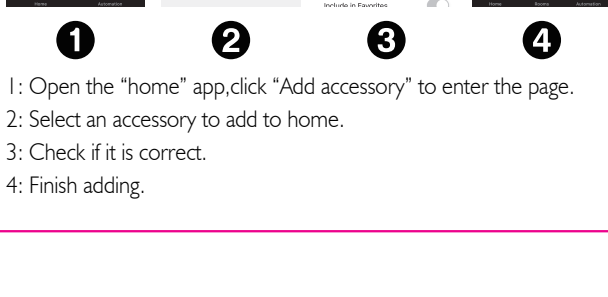
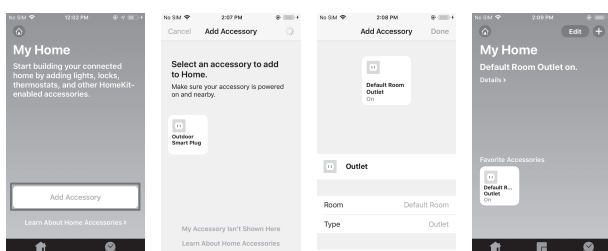
2

3

4

5

Use iPhone's own APP to add devices



1

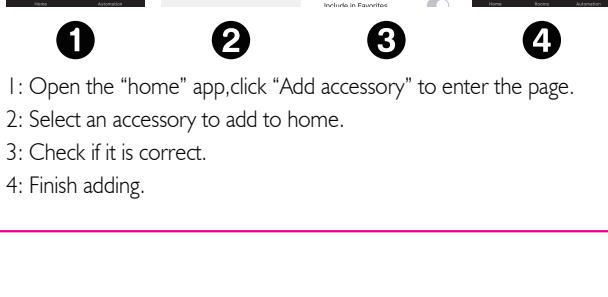
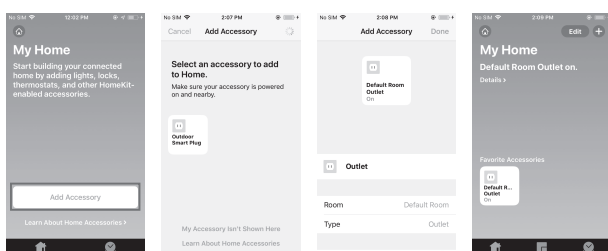
2

3

4

5

Use iPhone's own APP to add devices



1

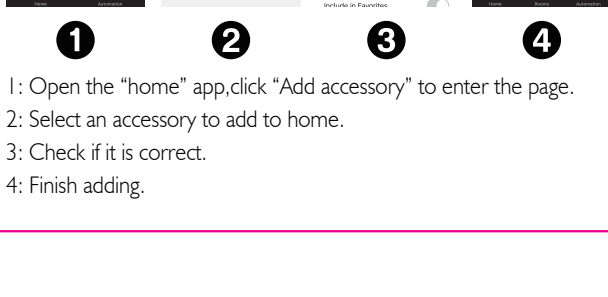
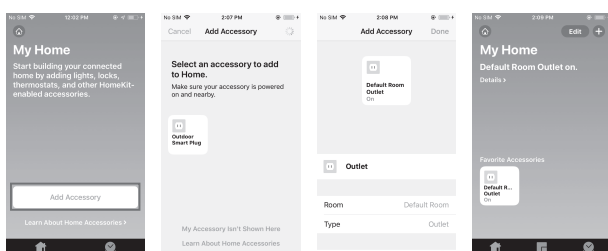
2

3

4

5

Use iPhone's own APP to add devices



1

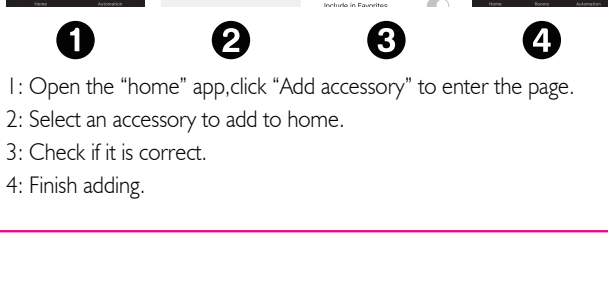
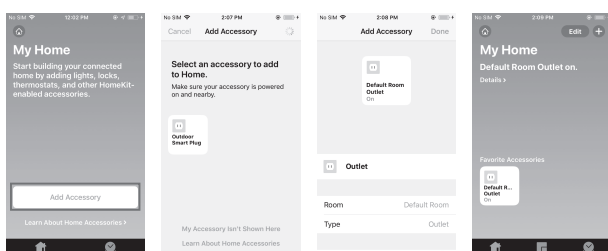
2

3

4

5

Use iPhone's own APP to add devices



1

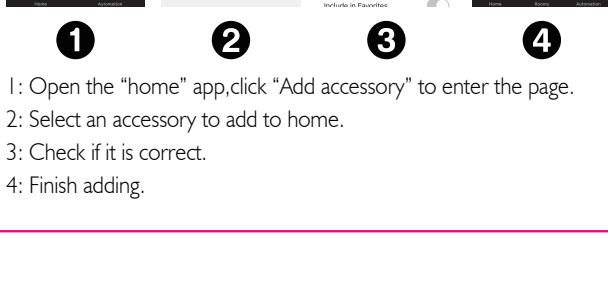
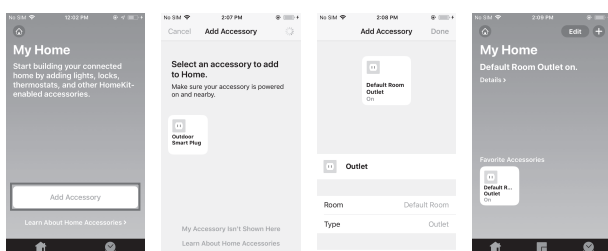
2

3

4

5

Use iPhone's own APP to add devices



1

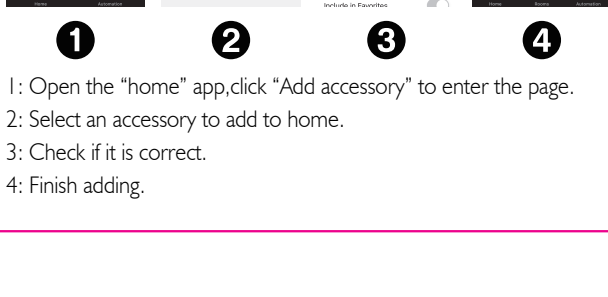
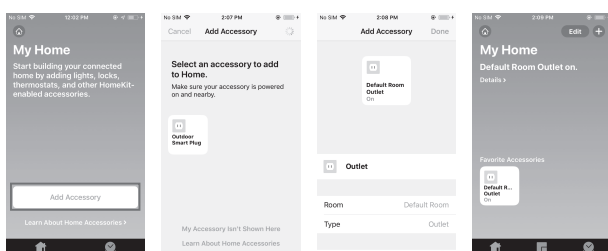
2

3

4

5

Use iPhone's own APP to add devices



1

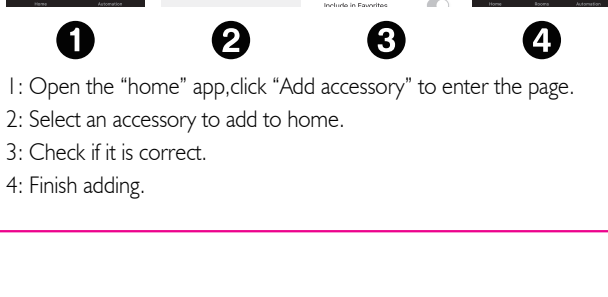
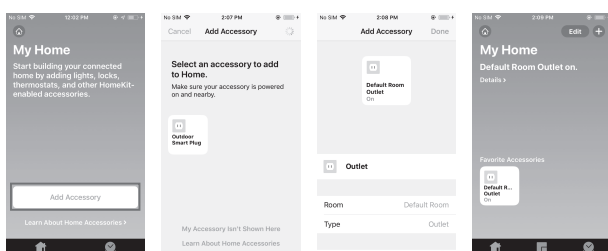
2

3

4

5

Use iPhone's own APP to add devices



1

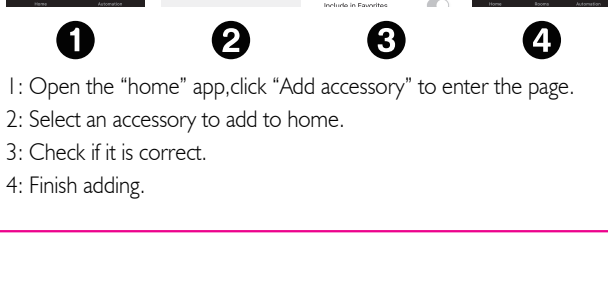
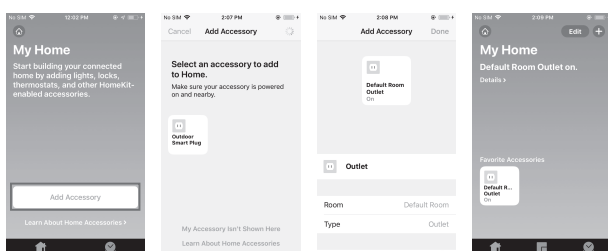
2

3

4

5

Use iPhone's own APP to add devices



1

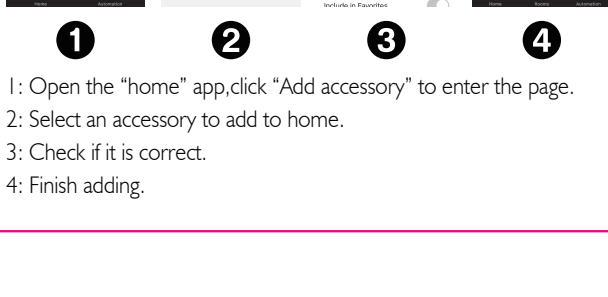
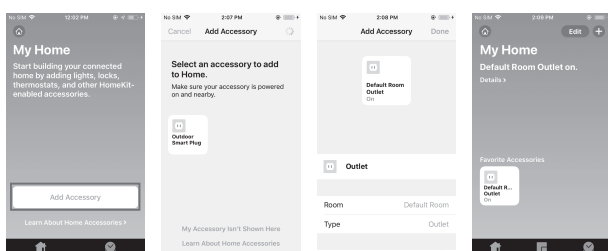
2

3

4

5

Use iPhone's own APP to add devices



1

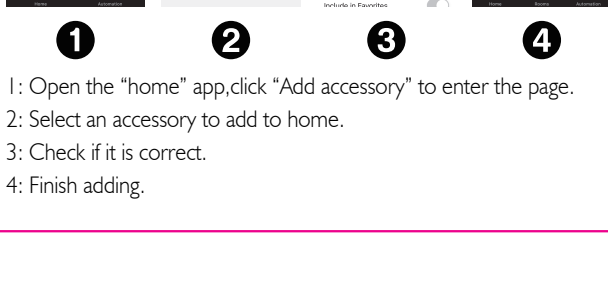
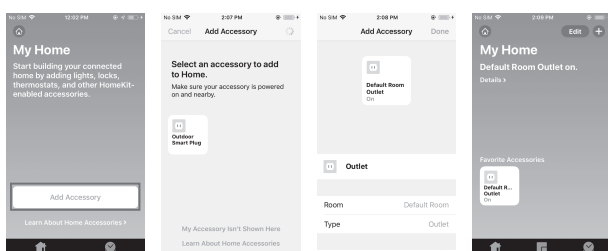
2

3

4

5

Use iPhone's own APP to add devices



1

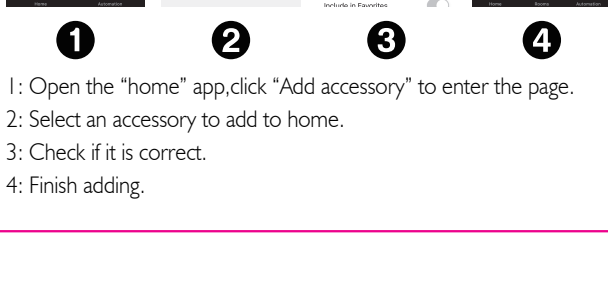
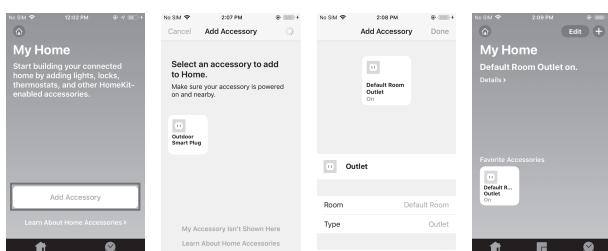
2

3

4

5

Use iPhone's own APP to add devices



1

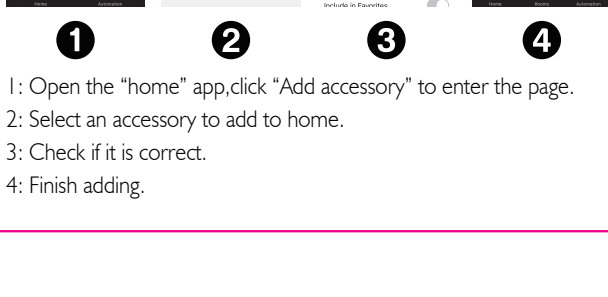
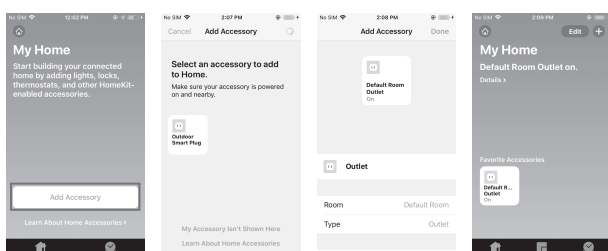
2

3

4

5

Use iPhone's own APP to add devices



1

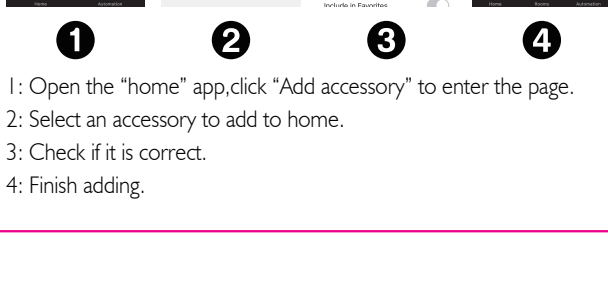
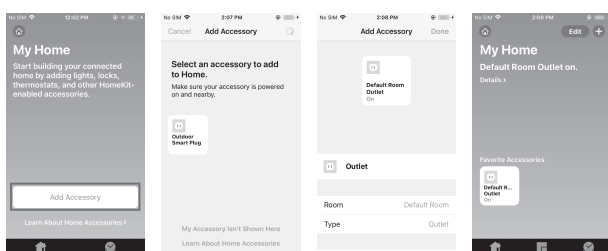
2

3

4

5

Use iPhone's own APP to add devices



1

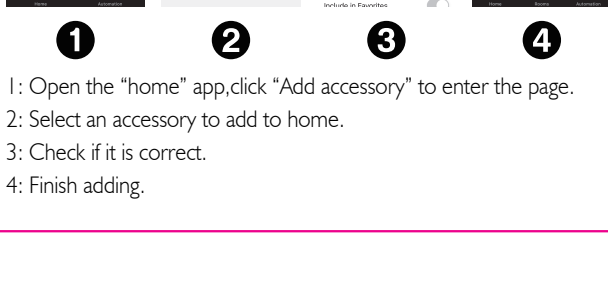
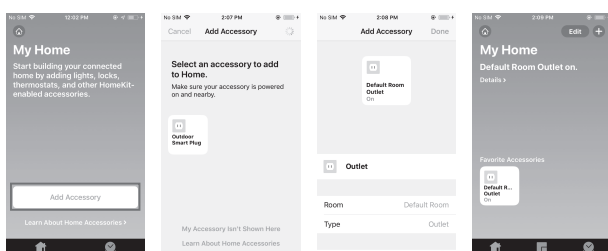
2

3

4

5

Use iPhone's own APP to add devices



1

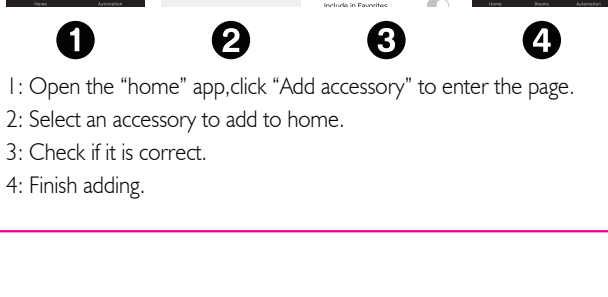
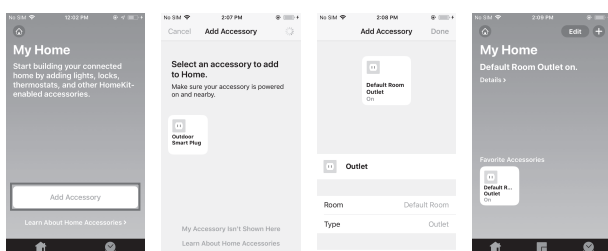
2

3

4

5

Use iPhone's own APP to add devices



1

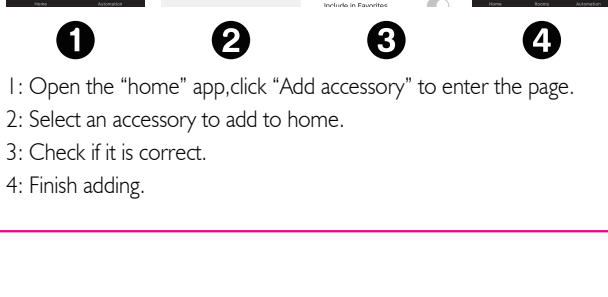
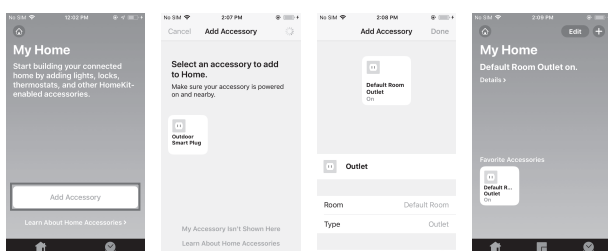
2

3

4

5

Use iPhone's own APP to add devices



1</