

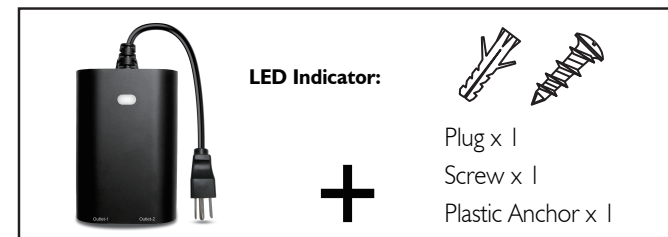
EVALOGIK®

Wi-Fi Outdoor Plug  
( 2 Outlets )

• WF97 •



Meet your new smart Plug !



#### (A) Manual / Program button

ON / OFF  
Network configuration: Hold the button for 5 seconds  
Switch between EZ mode and AP mode:  
Long press for 5 seconds

#### (B) Smart Outlet \* 2

This is your smart outlets that will be included in your smart home.

#### (C) Protector

Insert in connector when not in use.

For outdoor use

**Note:** Do not plug an extension cord in this smart plug.



#### Note:

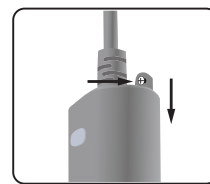
Your device may need to be within 100 feet of the controller to be included. If so, include the device to the network within 10 feet of the controller and relocate it to the desired position in your home. Be sure to refresh the network if the device is included in this manner.

#### Introduction

The EVALOGIK WF97 is an enabled 15A outdoor smart plug designed for use for most residential lighting and motor applications. It's compatible with LED, halogen, incandescent, xenon, fluorescent and compact fluorescent bulbs. Works with Amazon Alexa, Google Assistant. One smart outlet, you can use free App, or voice control by Alexa and Google Assistant to operate your devices in your home.

#### Specifications

Power: 125V AC, 60Hz  
Total(Both Outlets): 15 Amp Max  
Wireless Frequency: 2.4GHz  
Wireless Standard: IEEE802.11b/g/n  
Operating Temp of -4° F~122° F  
Please vertically hang on the wall.



Use our screws and anchor to lock it on the wall.(optional)

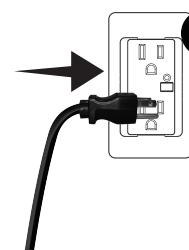


When the white LED flashes slowly (AP mode), please hold the button 5 seconds until the LED changes to blink rapidly--Back to EASY MODE.

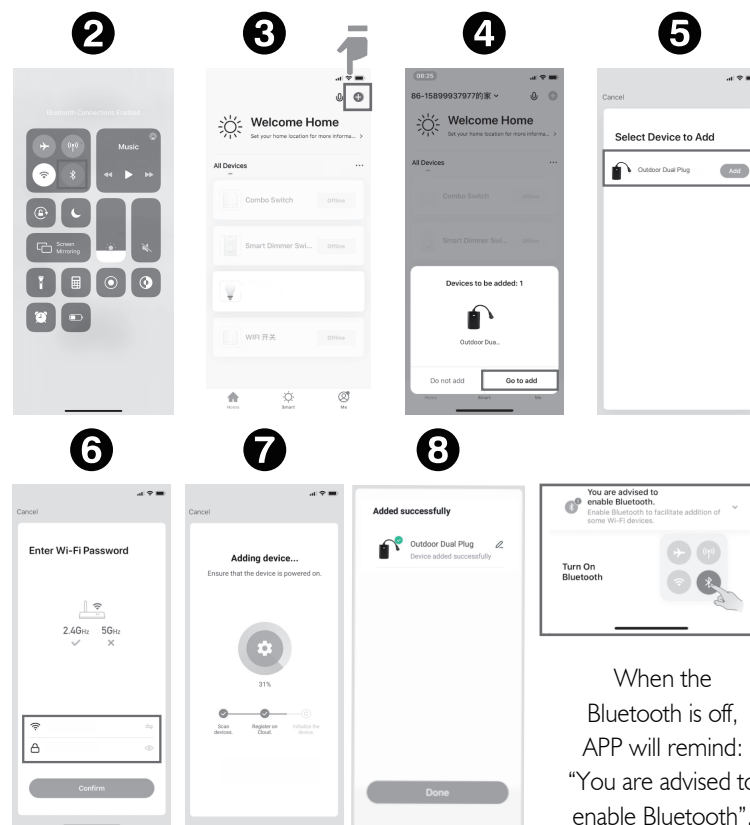
#### Note:

- 1) Our products support Bluetooth quick-fit and 2.4GHz Wi-Fi network.
- 2) 3 connection network modes: Bluetooth quick-fit Mode, Easy Mode, AP Mode. Choose the most suitable mode to configure the network.
- 3) Please operate quickly when the white LED indicator flashes rapidly.
- 4) When indicator flash enters the network, complete standard operation within the 3 minutes.
- 5) If you failed to connect with Wi-Fi network, please try to operate several times more.

#### ► Bluetooth quick-fit Mode ◀



- 1: Plug-in the device directly to the wall outlet. Once plugged in, it will enter into the Bluetooth auto-connection mode. The auto-connection comes with white LED blinks. The LED will blink 3 minutes. If it stopped, please hold the button 5 seconds until the LED blinks again.



When the Bluetooth is off, APP will remind: "You are advised to enable Bluetooth".

#### ► Easy Mode ◀



#### FCC warning:

This device complies with Part 15 of the FCC Rules. Operation is subject to the following two conditions:

- (1) This device may not cause harmful interference,
- (2) This device must accept any interference received, including interference that may cause undesired operation. changes or modifications not expressly approved by the party responsible for compliance could void the user's authority to operate the equipment.

#### NOTE:

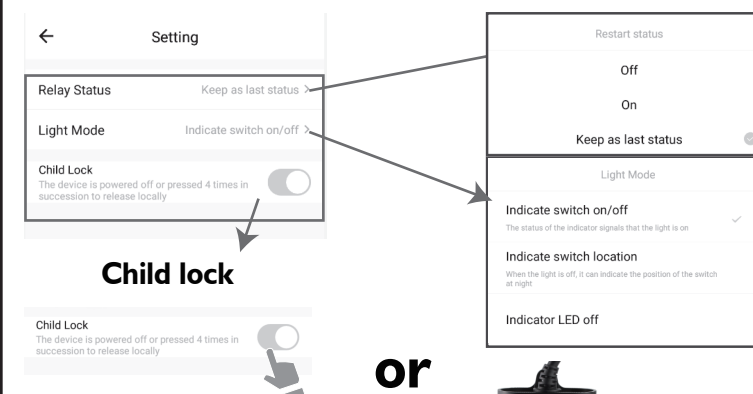
This equipment has been tested and found to comply with the limits for a Class B digital device, pursuant to Part 15 of the FCC Rules. These limits are designed to provide reasonable protection against harmful interference in a residential installation. This equipment generates, uses and can radiate radio frequency energy and, if not installed and used in accordance with the instructions, may cause harmful interference to radio communications. However, there is no guarantee that interference will not occur in a particular installation. If this equipment does cause harmful interference to radio or television reception, which can be determined by turning the equipment off and on, the user is encouraged to try to correct the interference by one or more of the following measures:

- Reorient or relocate the receiving antenna.
- Increase the separation between the equipment and receiver.
- Connect the equipment into an outlet on a circuit different from that to which the receiver is connected.
- Consult the dealer or an experienced radio/TV technician for help.

#### FCC Radiation Exposure Statement:

This equipment complies with FCC radiation exposure limits set forth for an uncontrolled environment. This transmitter must not be co-located or operating in conjunction with any other antenna or transmitter. This equipment should be installed and operated with minimum distance 20cm between the radiator& your body.

- 1: Tap '+' to add a device in your app
- 2: Select "Electrician" - "Socket (Wi-Fi)"
- 3: Enter the Wi-Fi Password
- 4: Hold the button 5 seconds until "white" LED blinks rapidly.



**Unlock operation:** click unlock on the APP or press the device button 4 times quickly.

or



#### ⚠ CAUTION - PLEASE READ!

This device (WF97) is intended for installation in accordance with the National Electric Code and local regulations in the United States, or the Canadian Electrical Code and local regulations in Canada. If you are unsure or uncomfortable about performing this installation consult a qualified electrician.

#### ⚠ MEDICAL EQUIPMENT

Please DO NOT use this plug to control Medical or Life Support equipment. This device should never be used to control the On/Off status of Medical and/or Life Support equipment.

#### ⚠ OTHER WARNINGS

Risk of Fire / Risk of Electrical Shock / Risk of Burns