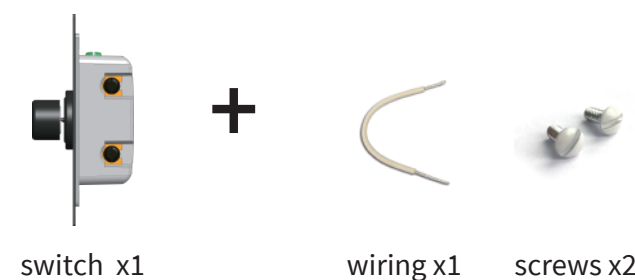


3-Way Z-Wave Smart Dimmer Switch

• ZKS31 •



Z-WAVE INTEROPERABILITY

This product can be included and operated in any Z-Wave network with other Z-Wave certified devices from other manufacturers and/or other applications. All non-battery operated nodes within the network will act as repeaters regardless of vendor to increase the reliability of the network. This device supports Lifeline (association group 1) supporting 1 node for lifeline communication. Group 1 must be assigned the Node ID of the primary controller where unsolicited notifications will be sent. The Z-Wave controller should set this association automatically after inclusion. Lifeline association only supports the "Device Reset Locally" function. Refer to the instructions of your controller for any available details on how this can be set.

Contents

Convention	Description	Convention	Description
Part 1: Introduction	• Product introduction • Installation steps	Part 5: Parameter Settings	Function description <ul style="list-style-type: none">• LED indicator• LED Indicator• Auto Turn-Off Timer• Auto Turn-On Timer• Restores state after power failure• Dimmer speed (ON/OFF Control)• Dimmer speed (only for local press & hold)• Multilevel minimum value can be set• Multilevel maximum value can be set• Association Group• Locally Button Press function• Command classes
Part 2: Wiring Diagram	• Wiring instructions • Single pole and 3/4-way wiring diagram	Part 6: Troubleshooting	• Solutions to some common problems
Part 3: Network Configuration	• Adding Device To Z-Wave Network • To Remove The Device • To Return The Device To Factory Defaults • Association Group		
Part 4: Manual Control	• LED indicator/ Button function • Adding / reset the device (Factory setting)		

Part 1. Introduction



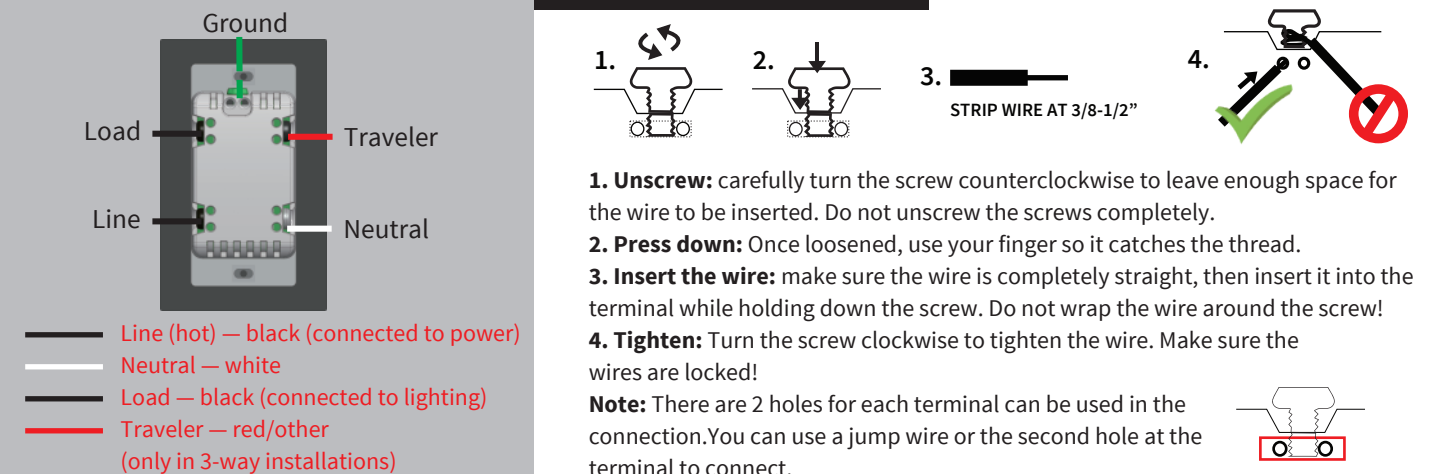
Basic Operation
The connected light can be turned ON/OFF in two ways:
1. Manually from the in-wall switch
2. Remotely with a Z-Wave Controller
Manual Control
The Knob Switch allows the user to:
Turn ON/OFF the connected fixture

Model: ZKS31
Power: 120VAC, 60Hz
Frequency: 500-40 MHz
Maximum Load: 150W LED, 500W incandescent (200W with both sides of sink tabs off)
Minimum Load: 5W for LED bulbs
Range: Up to 100 feet line of sight Operating
Temperature Range: 12-104°F (0-40°C)
For indoor use.
Specifications subject to change without notice
due to continuing product improvement
Approval: Z-Wave Plus Certified

A Few Quick Reminders

A quick note before we give out the wiring schematics. Please do not try installing this device if you are unsure of how electrical circuits operate within your home. As exciting as it is to have a smart switch installed, it can be dangerous and even life-threatening if you do not install this correctly. Please consult a qualified electrician if necessary. With that said, here are a few other warnings we'd like to point out for your safety:

HOW TO INSTALL THE WIRES

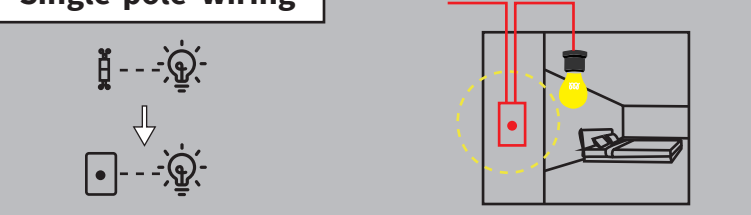


Note before installation

- The Z-Wave in-wall Smart Switch must not exceed 150W LED, 500W incandescent.
- Work with **regular 3-way on/off** for 2 locations control. It can only be connected with regular 3-way on/off switch, **don't use a smart switch or a dimmer switch! Couldn't work with an add-on switch!**
- The colors of your wires may not match the ones in our diagrams so please make sure you've **identified all wires correctly** based on their source, not color only.
- Please check your original 3-way wiring circuit in your home before installation, and then **follow the wiring diagram option 1 or 2** in the manual.
- Install the smart switch in the switch box which directly connects to the power **Line** and **Neutral**.
- This switch **requires a Neutral for installation**, or the installation will not succeed.
- Not recommended for fan.

Part 2. Wiring Diagram

Single-pole wiring



- Tool:** Please prepare a flat head screwdriver.
- Turn power OFF at circuit breaker or fuse box.**

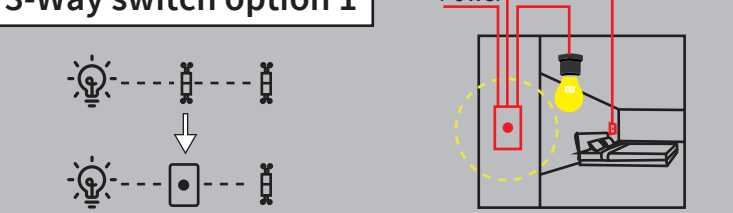
- Remove wallplate.
- Remove the switch mounting screws.
- Disconnect the wires and label them after remove the old switch. (Please use our sticker)

Line Load Neutral Ground Traveler (Just for 3-way switch)

- Carefully remove the switch from the switch box. (DO NOT disconnect the wires.)
- There are up to five screw terminals on the smart switch, these are marked (Please check «HOW TO INSTALL THE WIRES»)
- Fix the wallplate with screws after wiring succeed. (Please use our screws.)
- The ground was excluded from the diagram to simplify the illustration. Please Make sure all ground wires are connected to all switches respectively.

- Neutral required.** If the box do not have a Neutral, please stop! Connect the **white wire to neutral terminal** (use a white jump wire form the package or the second hole at the terminal to connect.)
- Insert the Line wire to Line terminal and Load wire to Load terminal. **LOAD and LINE Can't be swapped**, please make sure to identify them correctly!

3-Way switch option 1



regular 1

